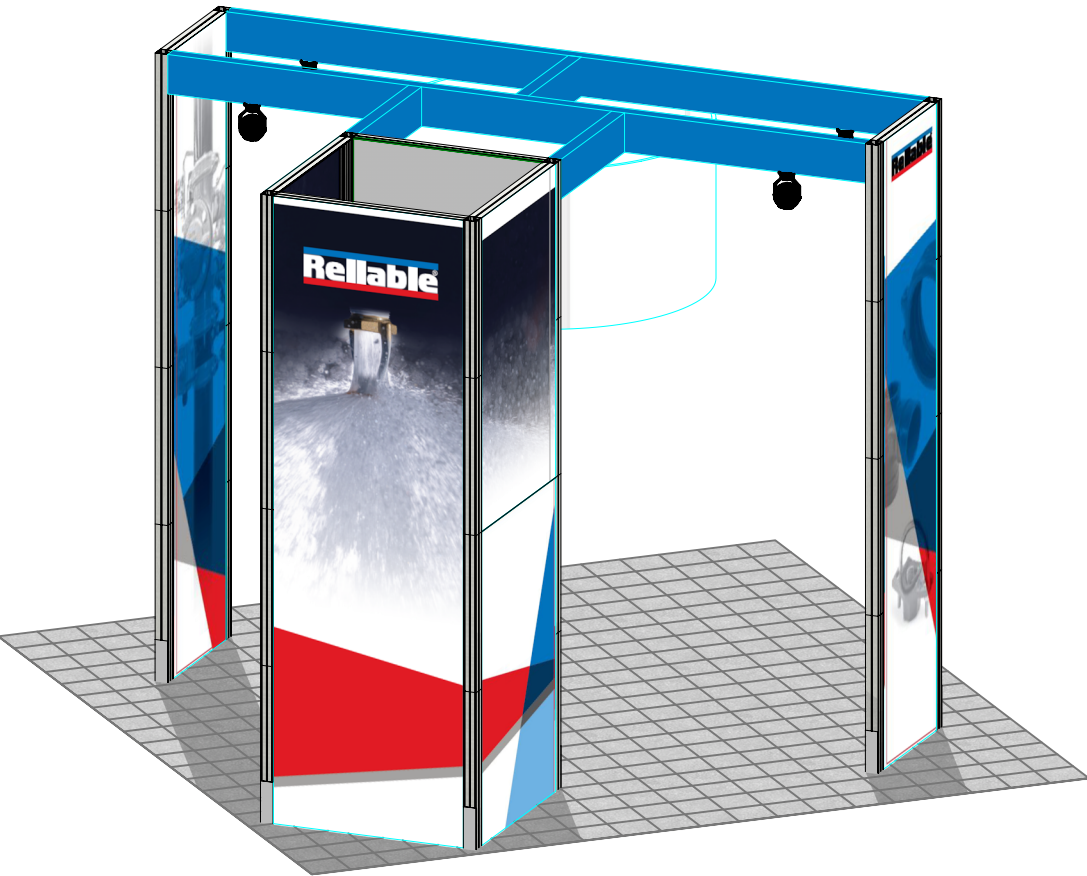


NIMLOK MICHIGAN/VIZCOM

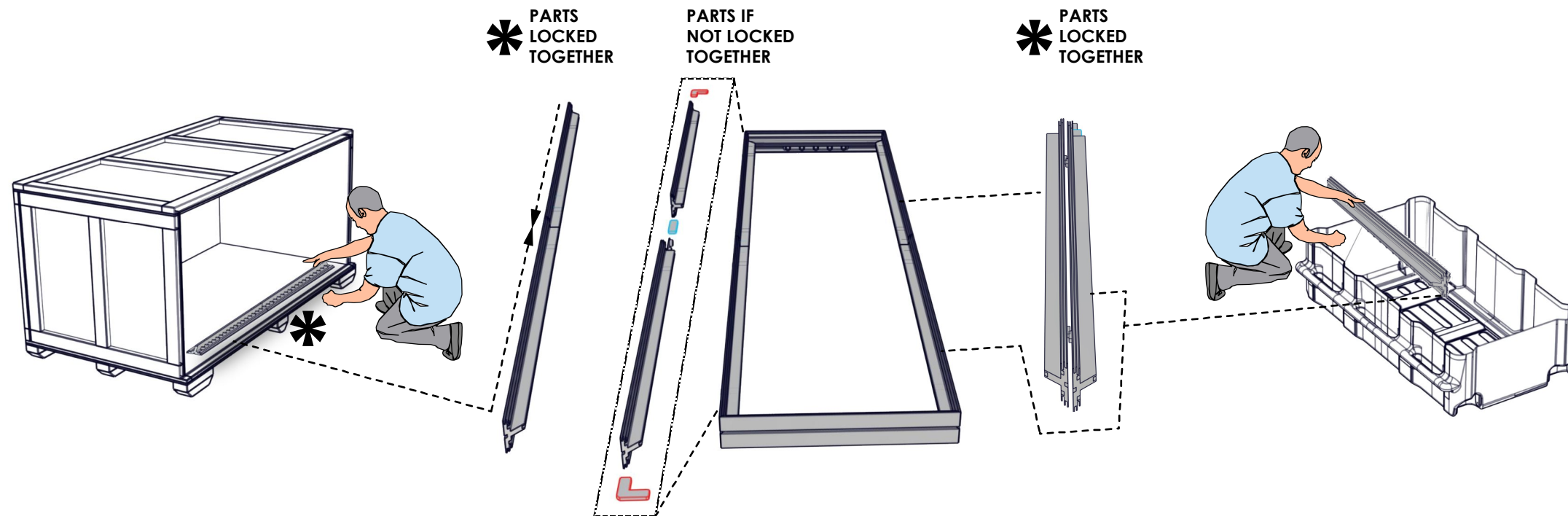
CLIENT NAME: AMPM RELIABLE
SHIP DATE: 03-12-2025
ORDER#: 461018
EMERGENCY #: (616)233-9401
SALES REP: JOSH CARLSON
CELL PHONE #: (630) 755-7761
DRAWINGS BY: EDGAR SANCHEZ



SET-UP NOTES

1. Redesign of this exhibit without approval by Nimlok may result in dangerous and unsafe structures. Nimlok disclaims any responsibility for redesigned exhibits it does not approve in writing.
2. Parts and components such as panels and extrusions are manufactured to metric sizing. Where ever possible sizes have been noted in feet and inches as well as in metric. Below is the imperial to metric sizing table as reference. "Nominal" refers to approximate size.

NOTE: PARTS MAY COME LOCKED TOGETHER FOR PACKING PURPOSES.



IMPERIAL TO METRIC SIZES

8' Nominal = 94 1/2" or 2400mm Actual
4' Nominal = 47 1/4" or 1200mm Actual
3' Nominal = 35 7/16" or 900mm Actual
2' Nominal = 23 5/8" or 600mm Actual
1' Nominal = 11 13/16" or 300mm Actual

FABRIC, VINYL & UV GRAPHIC CARE GUIDELINES

GENERAL HANDLING FABRIC GRAPHICS

- Your fabric graphics should always be handled in a clean, dry area with clean hands. When possible, use white fabric gloves.
- Be sure fabric is clean and dry before packing.
- Machine washing and/or drying is not recommended for all fabrics. Refer to chart below for which fabrics are washable.

EMERGENCY STAIN TREATMENT (FABRIC)

1. For dry stains, like loose dirt or pencil marks, try initially using masking tape or Magic Eraser (dry-not moistened).
 - Masking tape or MagicEraser (dry) can be quite effective at lifting dry, surface dirt. Try 'pulling' as much of stain away as you can. Avoid rubbing stain into fabric.
2. Introduce water or liquid cleaner for stains not responsive to masking tape or dry Magic Eraser.
 - When using liquids to treat stains, if at all possible, treat the stain with fabric off of the frame.
 - Place a clean dry cloth behind stain (to absorb stain while being treated). Moisten another cloth initially with just water (distilled water is optimal, if available).
 - Gently blot stain with moistened cloth (or small area of moistened Magic Eraser), while trying to push stain through to the back, using the dry cloth to absorb.
 - Repeat using care to keep the wet area as small as possible.
3. Grandma's Secret Spot Remover can be an effective stain remover. Mix several drops in a small cup with clean water. Repeat above technique, taking care to keep wet area as small as possible and using dry cloth on back of stain to absorb.

MACHINE WASHING FABRIC GRAPHICS

- Cold water/delicate cycle/tumble dry low or air dry. For stretch fabrics do not use dryer, let hang dry.
- Use caution on dryer time with graphics containing liners. Its best to put tension fabric on frame when fabric is still damp and let it air dry. Always be sure that the aluminum frame is clean when mounting the damp graphic.
- Fabric stretch graphics that are washed and machine dried may shrink up to 3/4" per every 50" of fabric in the direction of the stretch and shrink up to 1/4" in the non stretch direction.

STORING & PACKING BACKLIT GRAPHICS

- To avoid cracks in the ink or having to steam graphics, Backlit fabrics should be loosely folded with bubble wrap or stored around a tube.
- Avoid folding the graphic tightly to store in a small bag or box.

GENERAL HANDLING VINYL & UV GRAPHICS

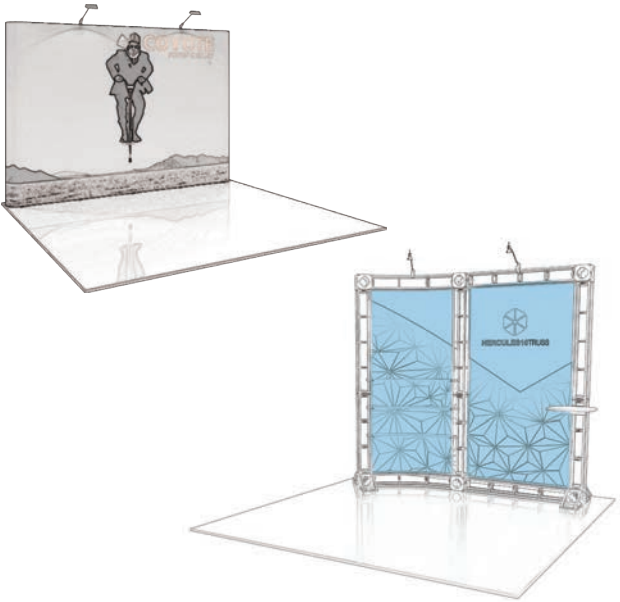
- Vinyl banners and rigid graphics should always be handled in a clean, dry area with clean hands. When possible, use white fabric gloves.
- Be sure vinyl/ UV is clean and dry before packing. Always follow material handling and packing instructions included.
- All vinyl materials should be rolled with graphics facing in to protect the graphic printed side. Roll on a tube if available.
- Avoid folding materials to reduce the risk of crease lines and chipped inks. If a graphic must be folded, try to fold loosely and as few times as possible.

EMERGENCY STAIN TREATMENT (UV)

- For drier stains, like loose dirt, pencil marks or adhesive, try initially using masking tape. Masking tape can be quite effective at lifting dry, surface dirt. Try 'pulling' as much of stain away as you can and avoid rubbing the stain into the material.
- When using Solvent to clean a stain be sure to avoid any image. Solvent is aggressive and will take the image off. Soapy water should be used at a ratio of 1 part Dawn® /10 parts water.
- While using Windex® avoid scrubbing harshly. Too much pressure can fade the graphic print.

GENERAL HANDLING OF ROLLABLE PVC PANELS

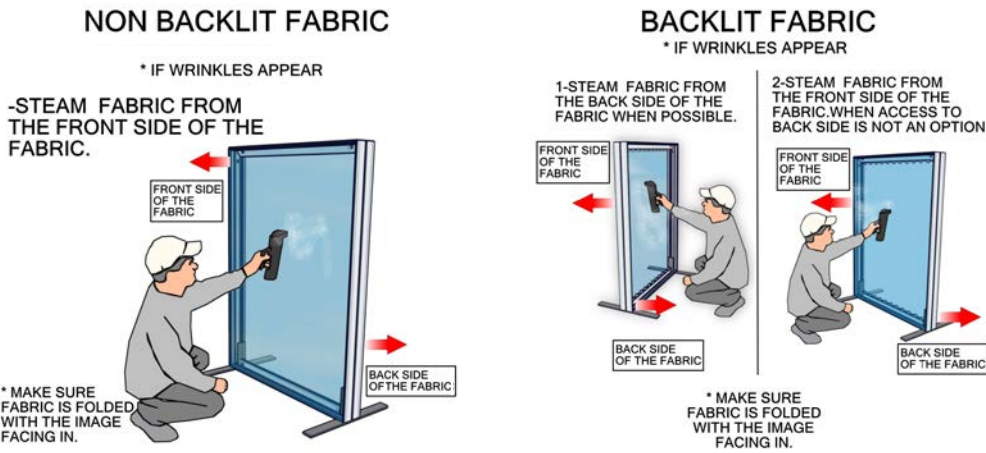
All mural panels, truss panels and detachables should be rolled with graphics facing out to protect the graphic printed side. Mural panels should be stored in the original plastic sleeves that are provided with the panels.



FABRIC, VINYL & UV GRAPHIC CARE GUIDELINES

STEAMING FABRIC GRAPHICS

- For optimal results, steam wrinkles when fabric is tensioned and installed securely on the frame.
- Fill steamer with clean drinking water or distilled water. Avoid using water containing hard minerals.
- Hold steamer upright and hold close to fabric. Avoid touching fabric with steamer.
- Do not tip steamer as water drips may cause water marks to form on graphic.

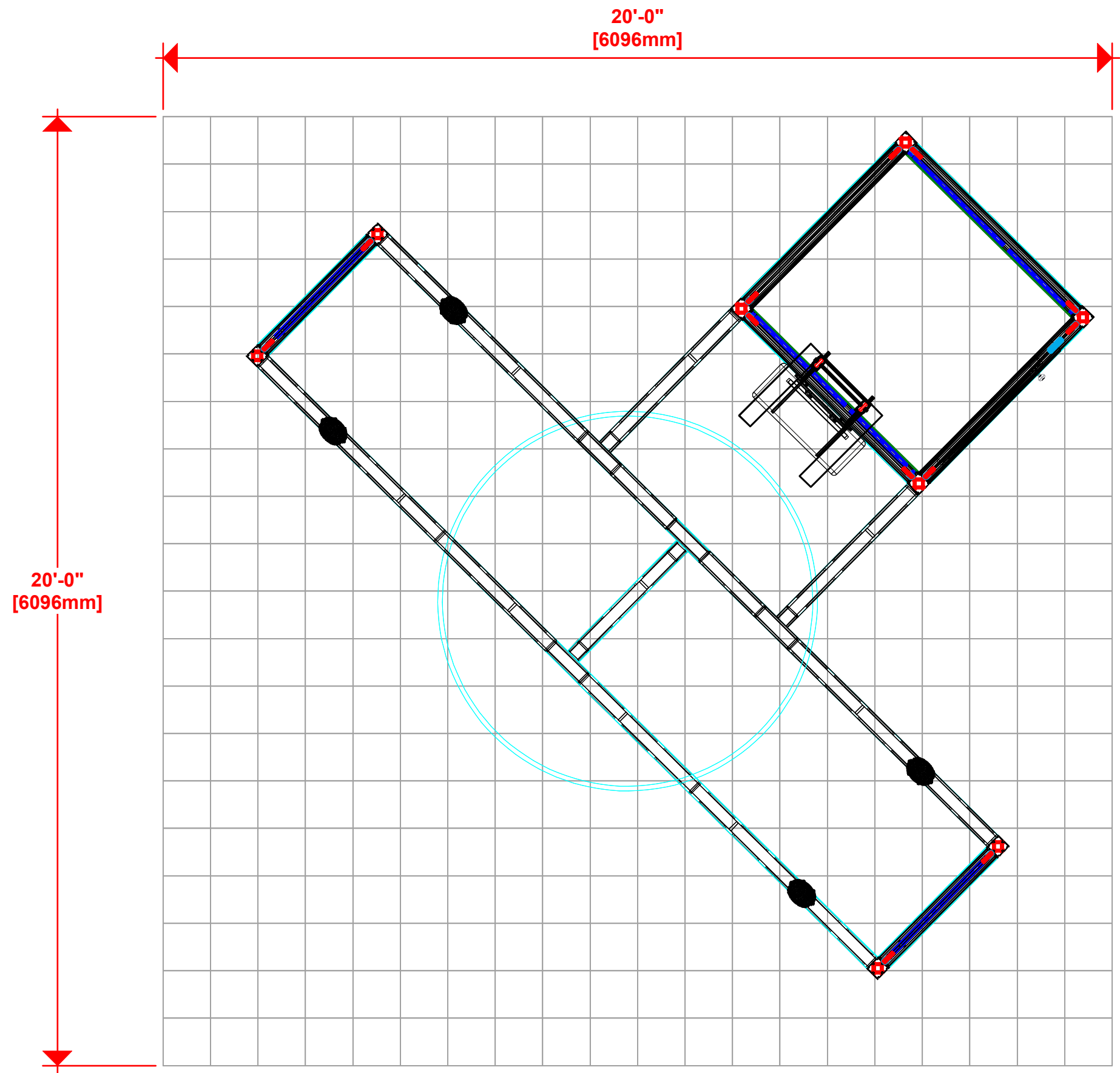


HANDLING REFERENCE CHART

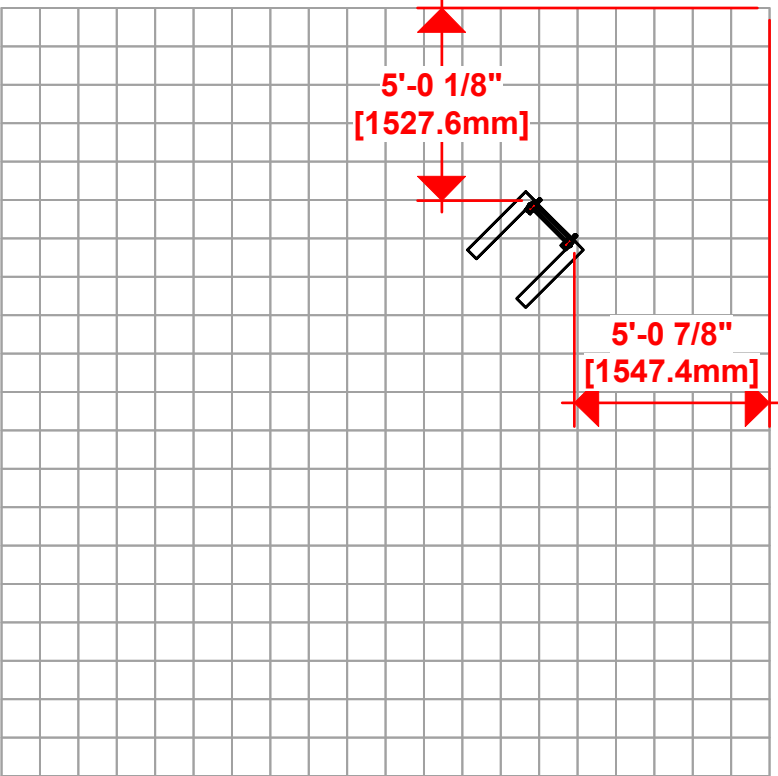
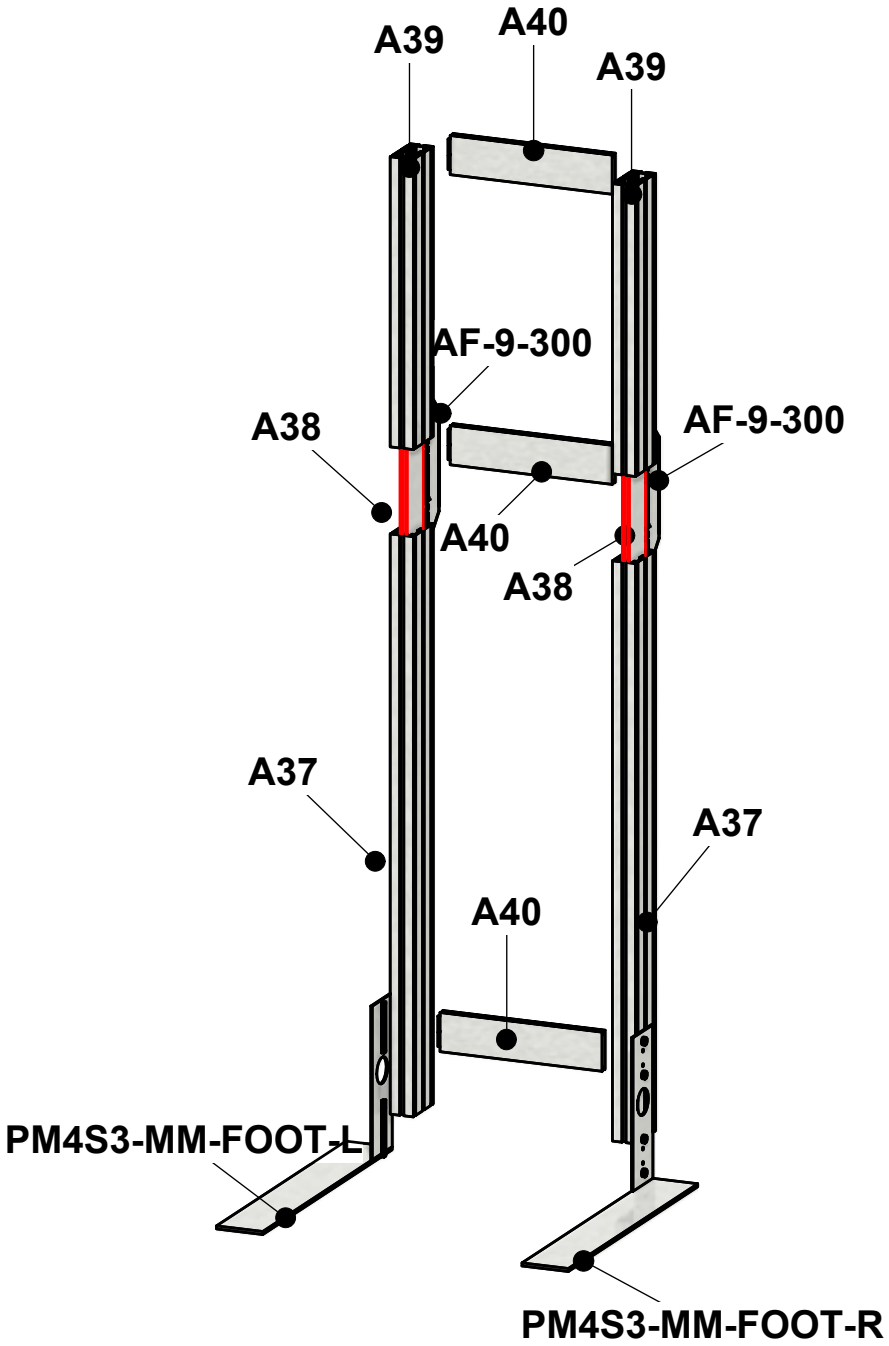
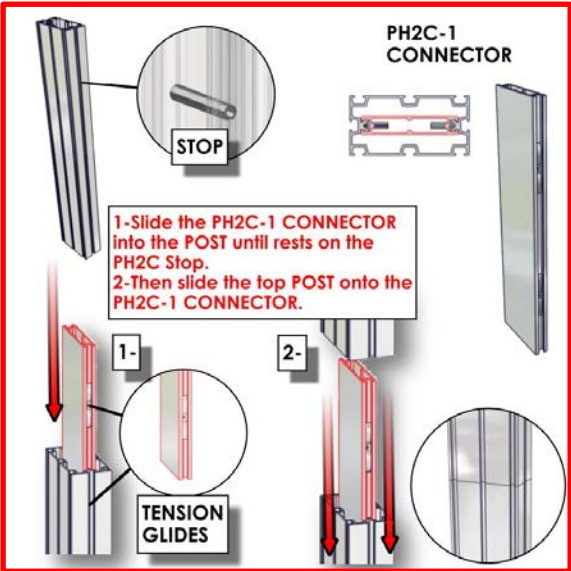
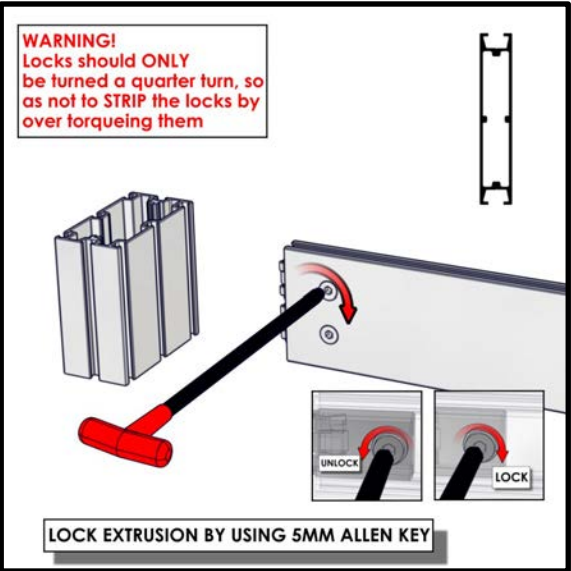
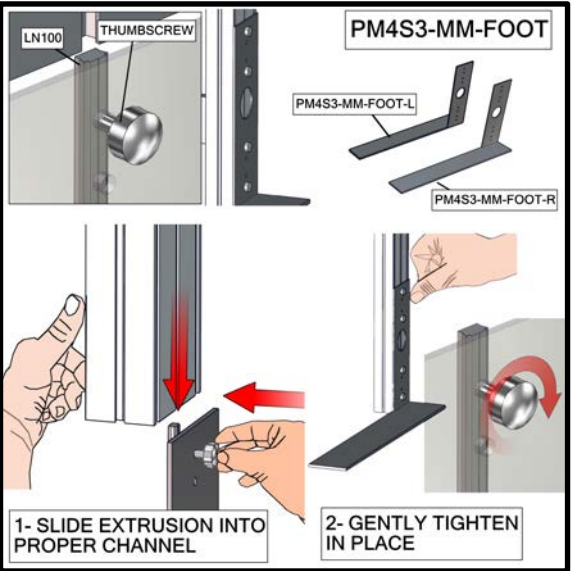
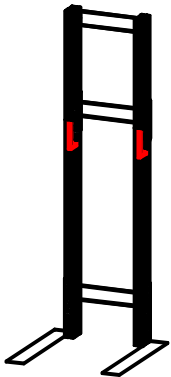
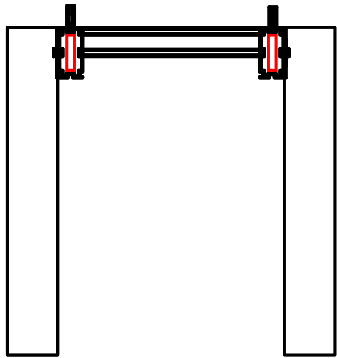
FABRIC					
	WASHING MACHINE	DRY CLEAN	SPOT CLEAN	STEAMING/ IRON	MAGIC ERASER
RESILIENCE	NO	NO	NO	NO	YES (ONLY ON WHITE)
OXFORD	YES	YES	YES	YES	YES
POWER STRETCH	YES	YES	YES	YES	YES
DISPLAY POLYESTER	YES	YES	YES	YES	YES
DISPLAY POLY CONVERTIBLES TABLE THROWS	YES (MUST VELCRO THE TABS)	YES (MUST VELCRO THE TABS)	YES	YES	YES
OUTDOOR FLAG	YES	N/A	YES	YES	YES
CANVAS OUTDOOR	NO	NO	YES	STEAM ONLY	YES
CANVAS LIGHTBOX	NO	NO	NO	STEAM ONLY	YES
AGILITY	YES	YES	YES	(ONLY W/ 100% TENSION)	YES
SUPER STRETCH	YES	YES	YES	(ONLY W/ 100% TENSION)	YES
TRIPLE WHITE	YES	YES	NO	YES	NO
ECLIPSE	NO	NO	YES	STEAM ONLY	YES
SOFT KNIT	YES	YES	YES	YES	YES
SHEER	YES	YES	YES	YES	YES

VINYL & ROLLABLE			
	SOLVENT	SOAPY WATER (DAWN®)	WINDEX®
FLATMAXX	ONLY ON WHITE	YES	NO
SCRIM 130Z/ 180Z	ONLY ON WHITE	YES	NO
VINYL 200Z	ONLY ON WHITE	YES	NO
MELINEX	NO	YES	NO
MURAL PANELS	NO	YES	YES
UV RIDGED	NO	YES	YES





Code	#	Description
A37	2	1200MM PM4S3-1200 EXTRUSION-WITH STOP AT 165MM-WITH STOP AT 165MM
A38	2	300MM PH2-TG EXTRUSION
A39	2	600MM PM4S3-600 EXTRUSION-WITH STOP AT 165MM-WITH STOP AT 165MM
A40	3	350MM CUT DOWN FROM 600MM LENGTH OF PH2 EXTRUSION-WITH CAM LOCKS-WITH CAM LOCKS
PM4S3-MM-FOOT-L	1	PM4S3 MONITOR MOUNT FOOT, LEFT
PM4S3-MM-FOOT-R	1	PM4S3 MONITOR MOUNT FOOT, RIGHT
AF9-300	2	AF9-300



Monitor/Touch Screen Stand

These pieces have been added for stability purposes. (2) B2, (1) B3, (2) B4

See page 1 of setup instructions for monitor stand setup.



(2) additional feet (B3) added to inside of monitor mount for stability



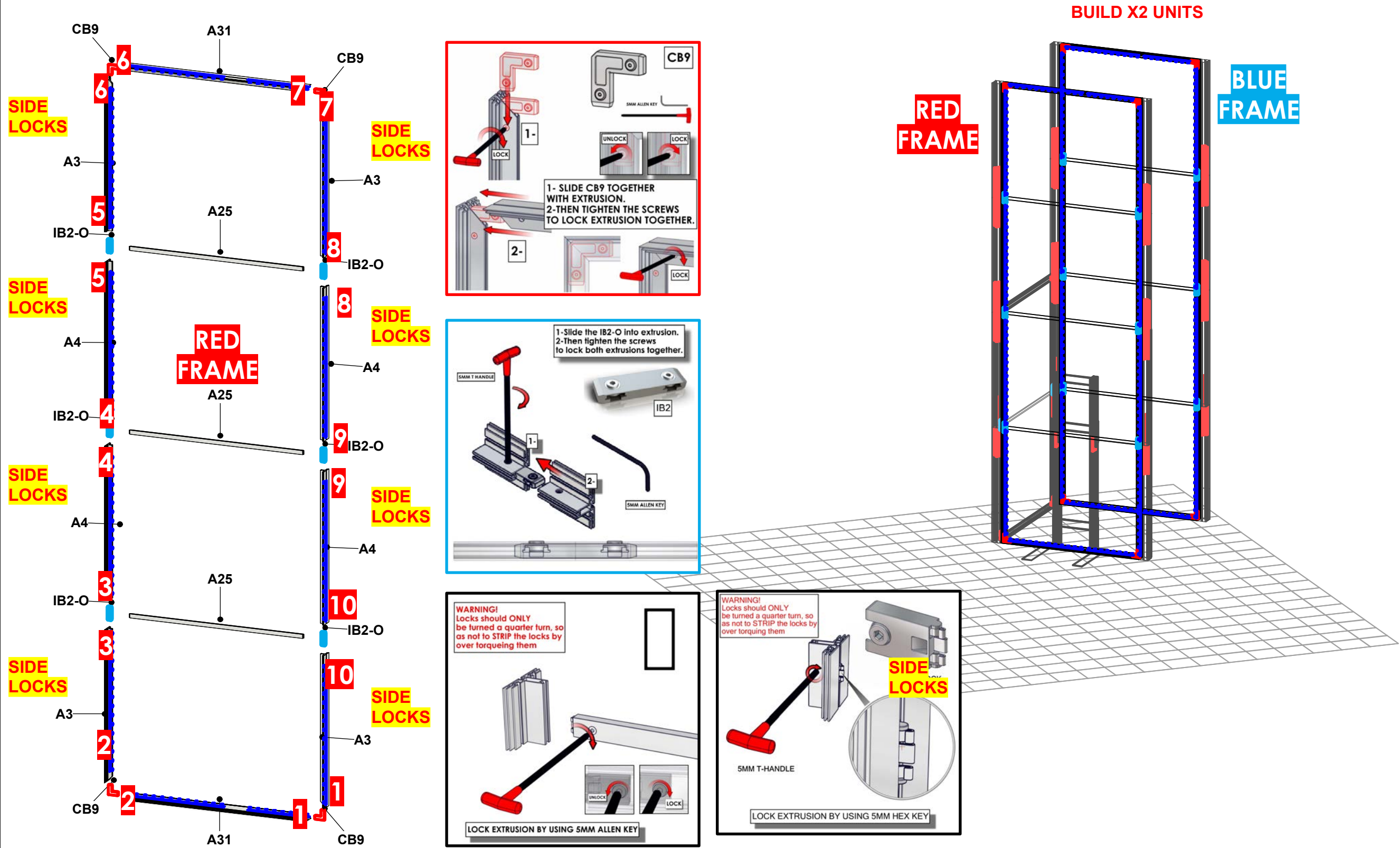
(2) AF16 (B4): add to back supports of mount and tighten seam



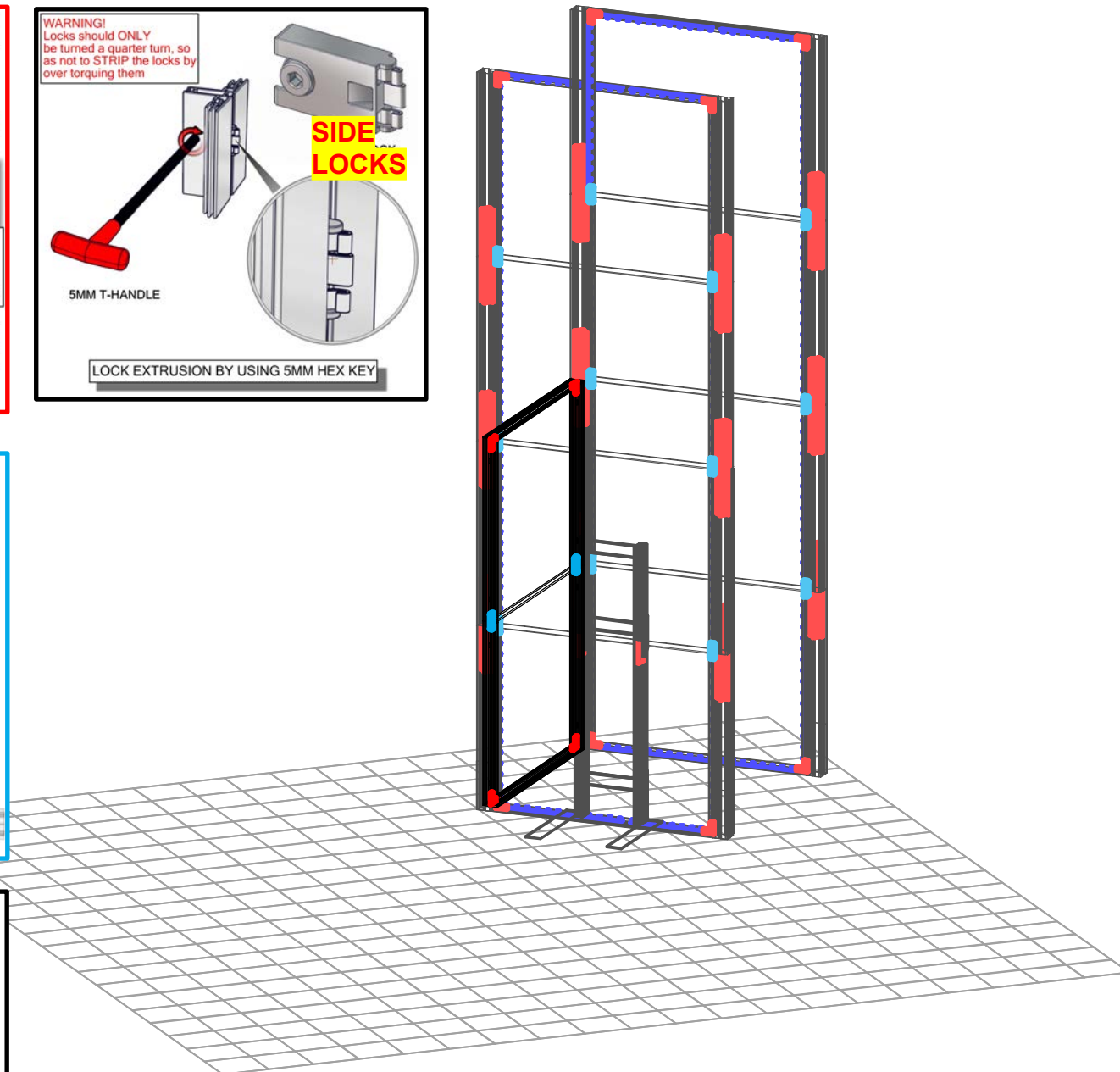
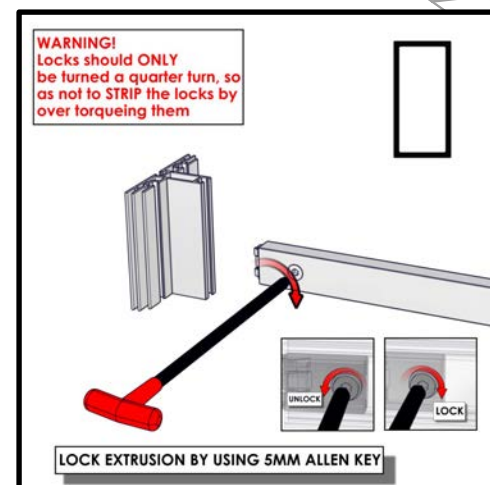
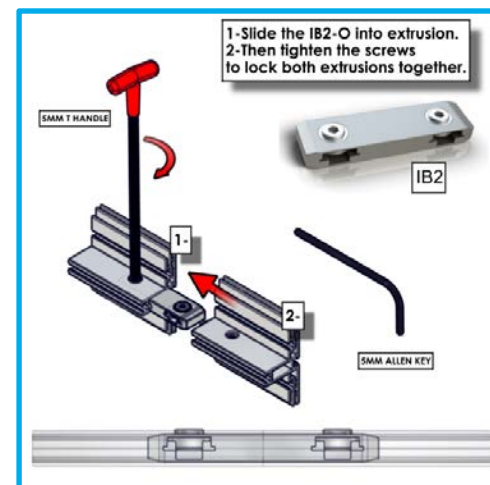
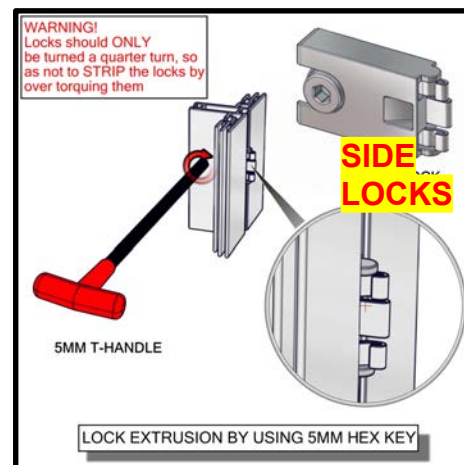
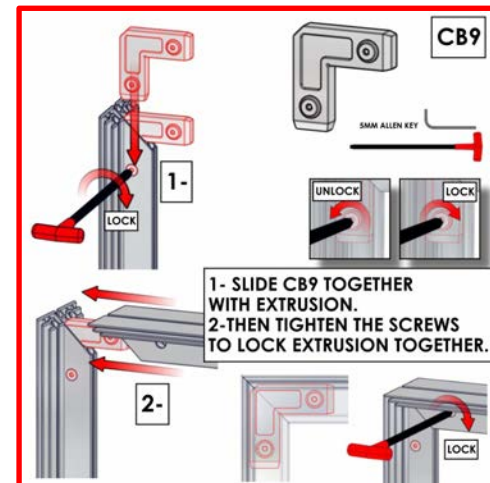
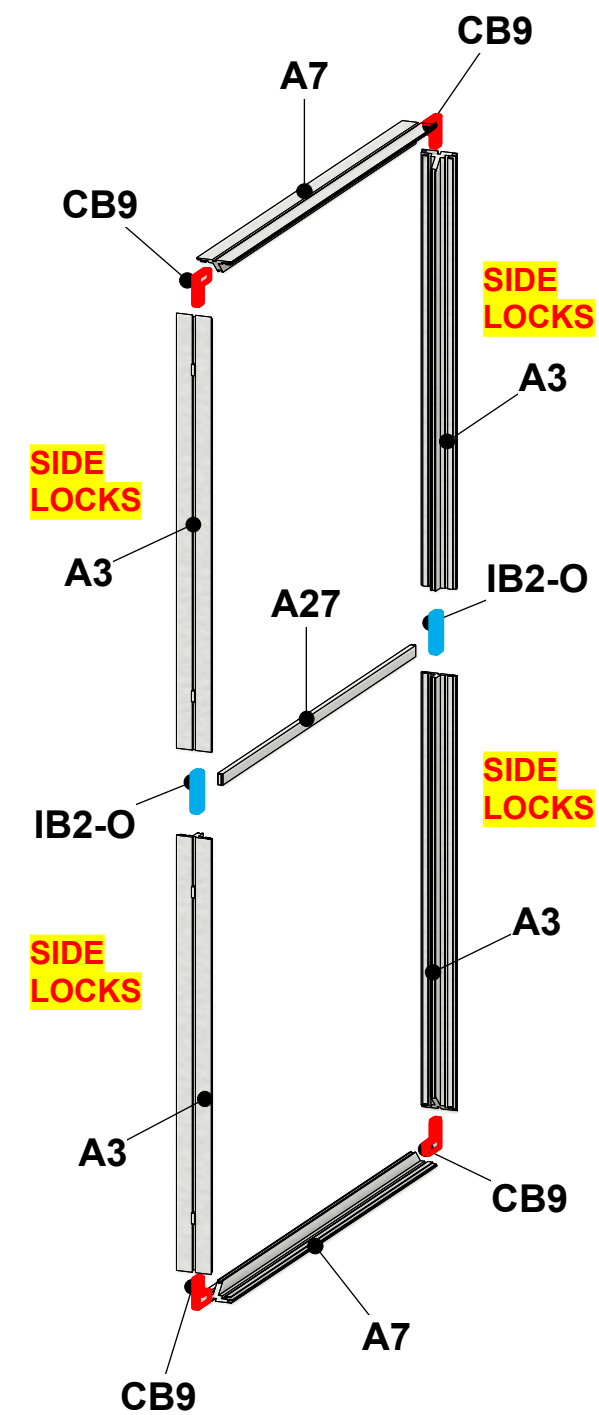
- (1) 1174MM PH (B3) connect to frame that houses graphics. This will be internal, sandwiched between liner and backlit graphic (see photo below).
- (2) This extrusion does not connect to the monitor stand; it rests on top of the monitor arms (See photo above). It is connected to the closet structure with cam locks. This acts as a brace to further prevent tipping forward.
- (3) Cams attach on inside closet channel 4" extrusion.



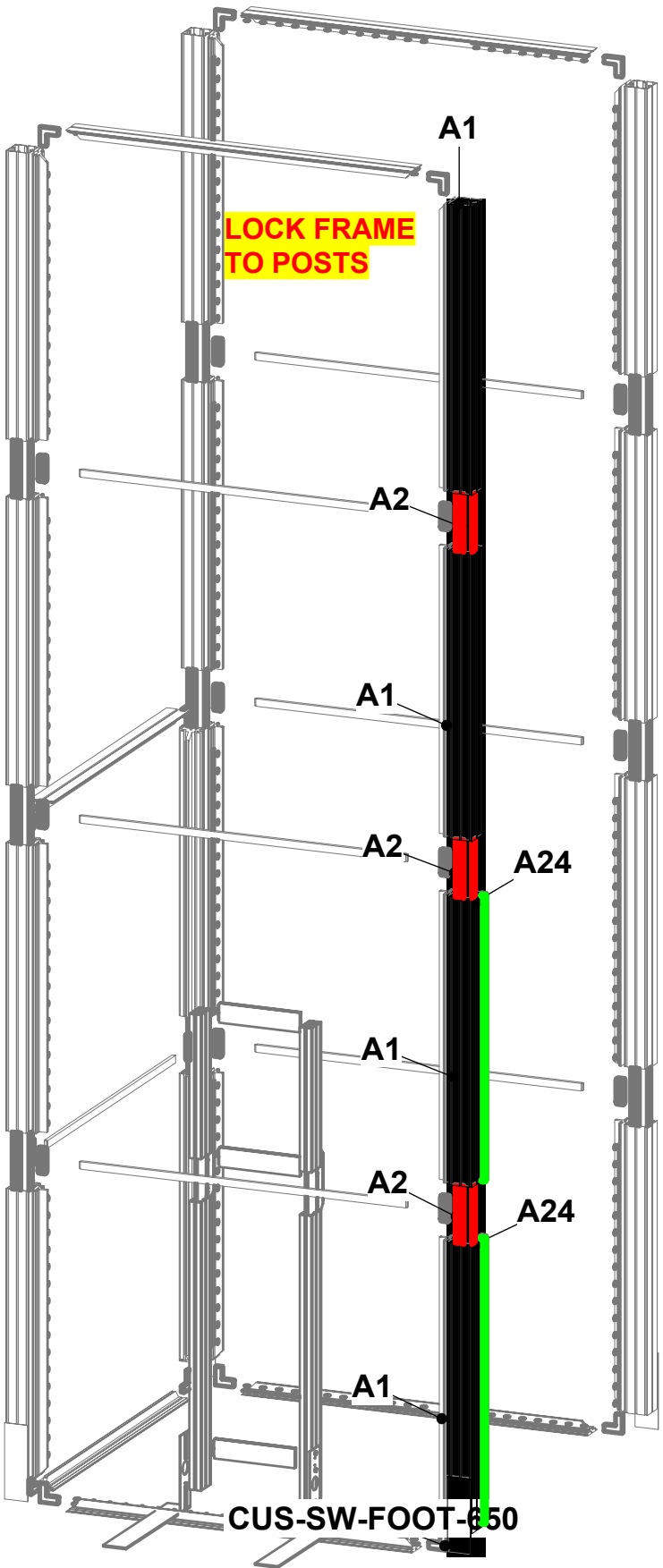
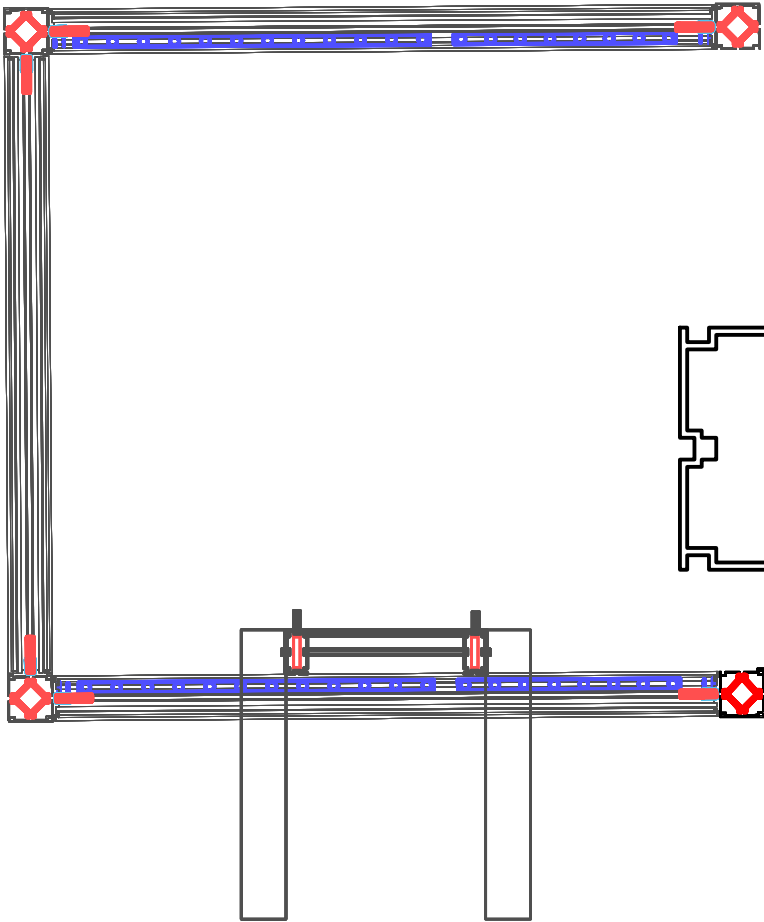
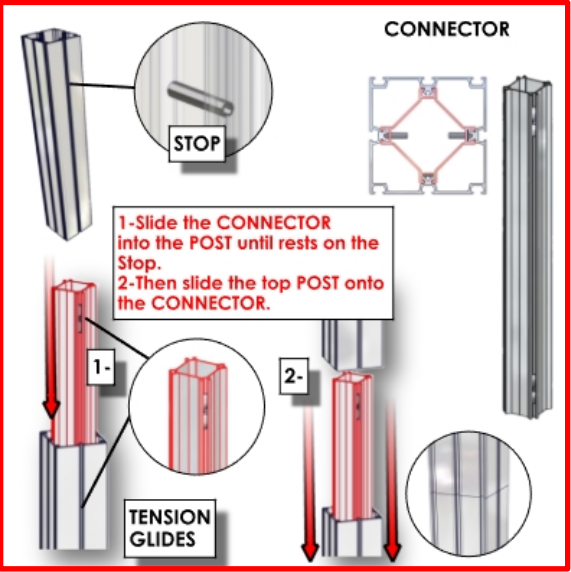
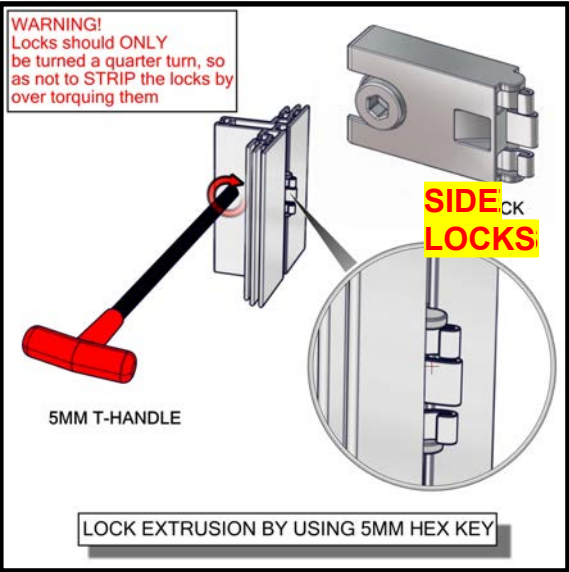
Code	#	Description
A31	4	1500MM LENGTH OF PHFC4 EXTRUSION-WITH MITRE CUT BOTH ENDS
A3	8	1200MM LENGTH OF PHFC4 EXTRUSION-WITH MITRE CUT FOR CB9 ONE END-IB2 LOCK HOLE ONE END-WITH SIDE LOCKS
A4	8	1200MM LENGTH OF PHFC4 EXTRUSION-WITH IB2 LOCK HOLES BOTH ENDS-WITH SIDE LOCKS
A25	6	1410MM CUT DOWN FROM 1500MM LENGTH OF PH1 EXTRUSION-WITH SLIDE LOCKS BOTH ENDS- (LAMINATED: WILSONART DESIGNER W
IB2-O	12	JOINER BAR (OLD STYLE)
CB9	8	90 DEGREE JOINER



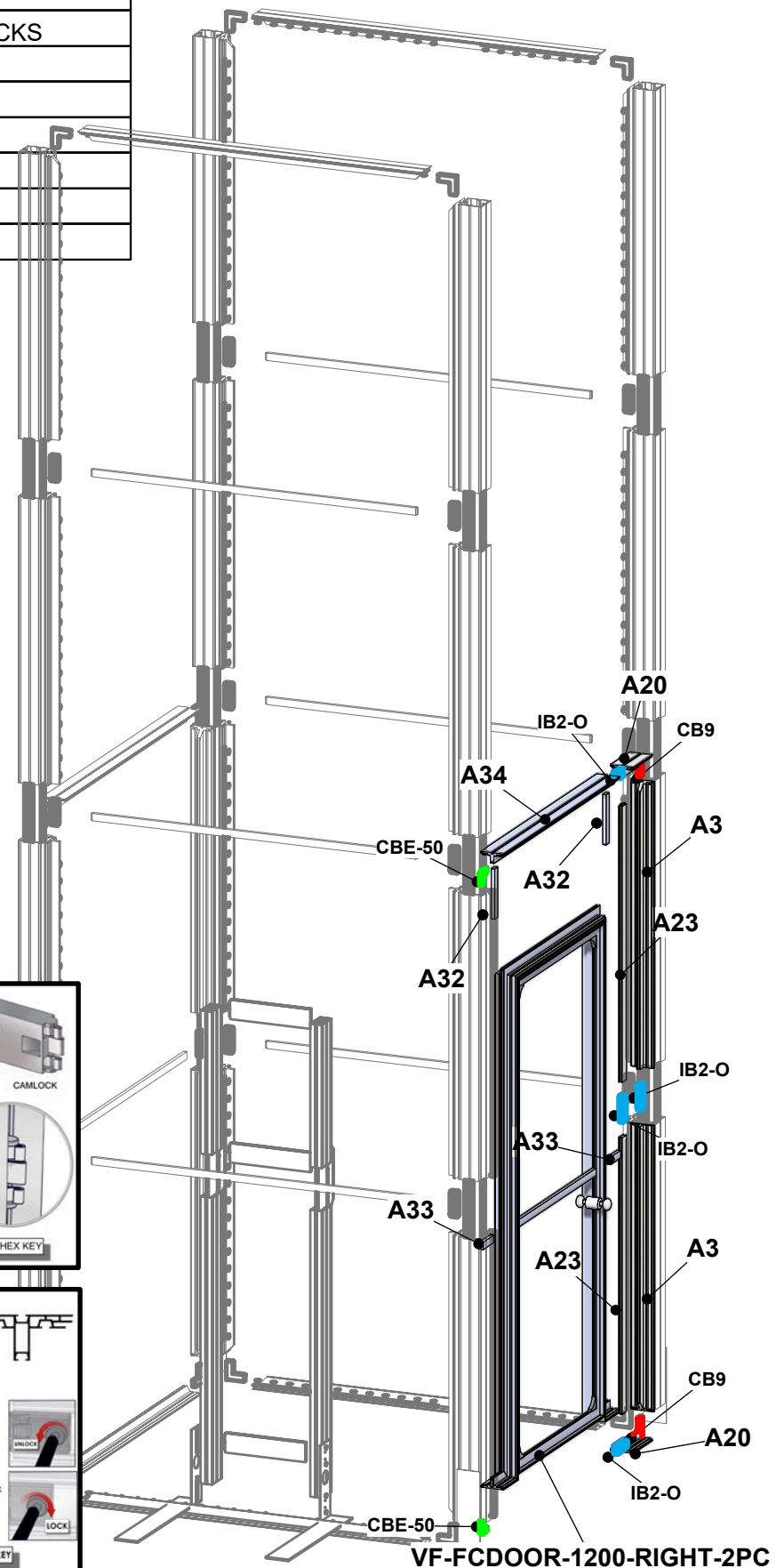
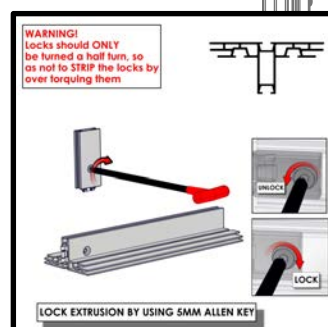
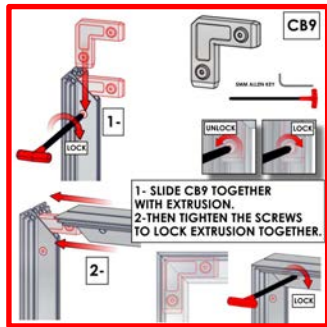
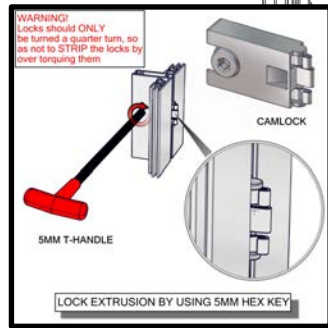
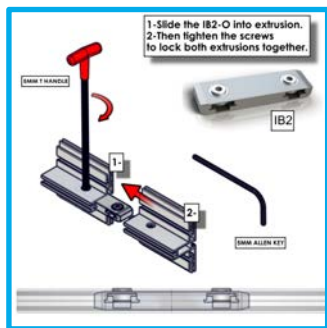
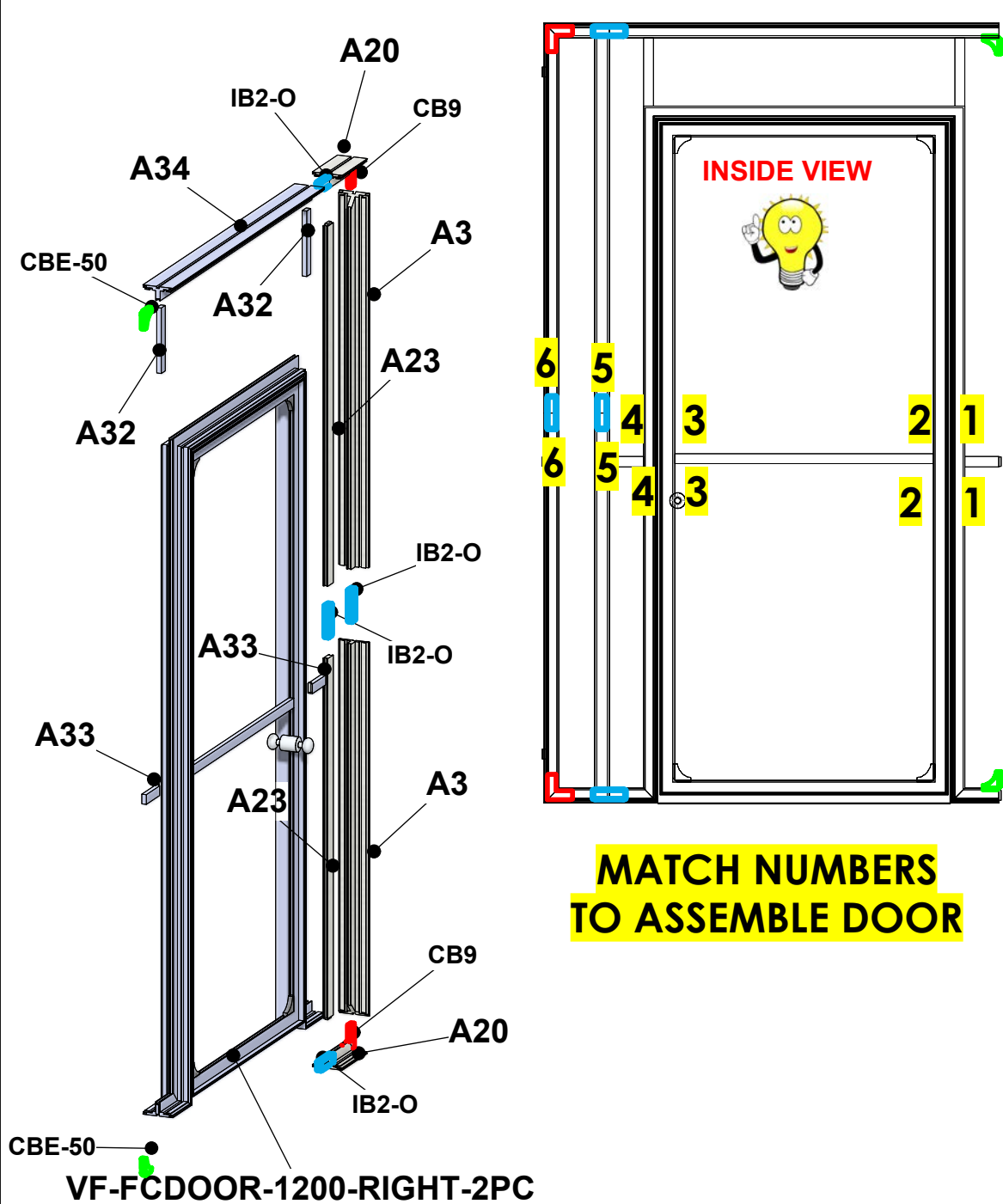
Code	#	Description
A7	2	1400MM CUT DOWN FROM 1500MM LENGTH OF PHFC4 EXTRUSION-WITH MITRE CUT BOTH ENDS
A3	4	1200MM LENGTH OF PHFC4 EXTRUSION-WITH MITRE CUT FOR CB9 ONE END-IB2 LOCK HOLE ONE END-WITH SIDE LOCKS
A27	1	1310MM CUT DOWN FROM 1500MM LENGTH OF PH1 EXTRUSION-WITH SLIDE LOCKS BOTH ENDS- (LAMINATED: WILSONART DESIGNE
IB2-O	2	JOINER BAR (OLD STYLE)
CB9	4	90 DEGREE JOINER



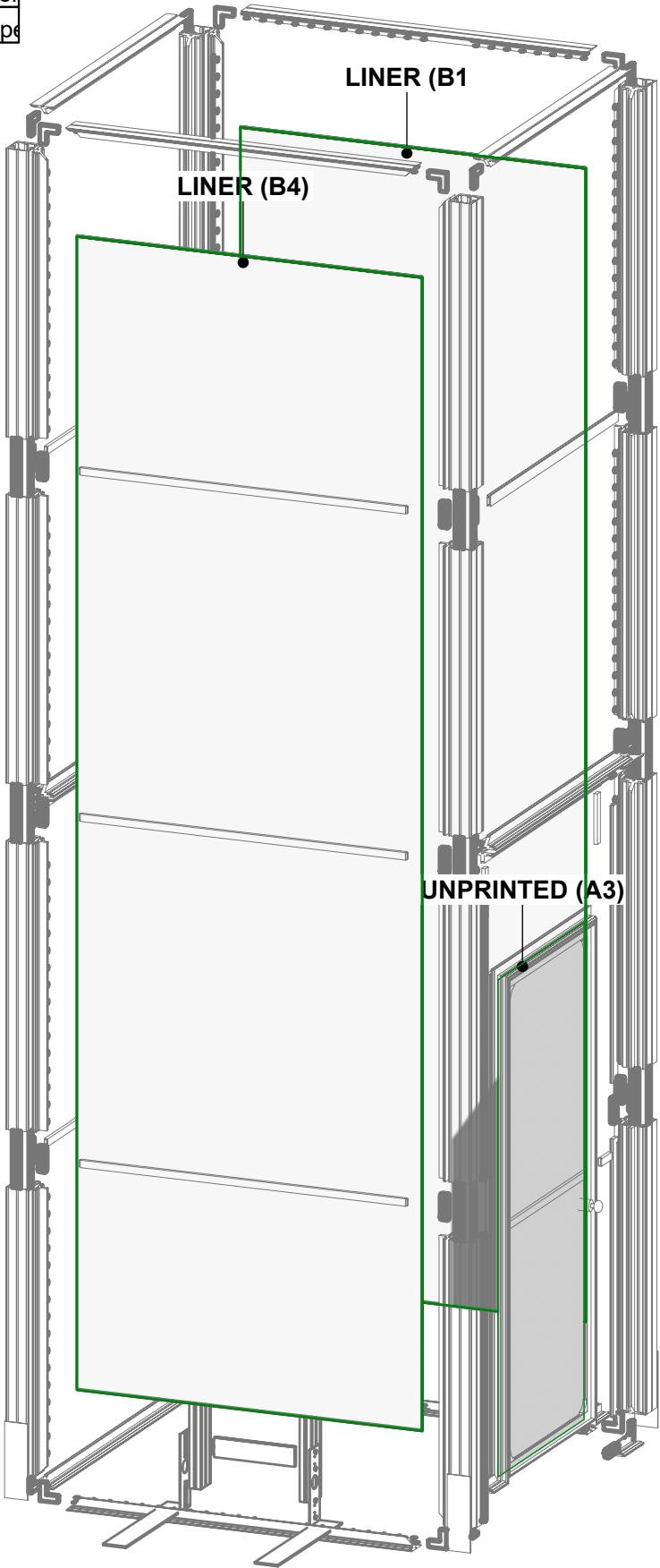
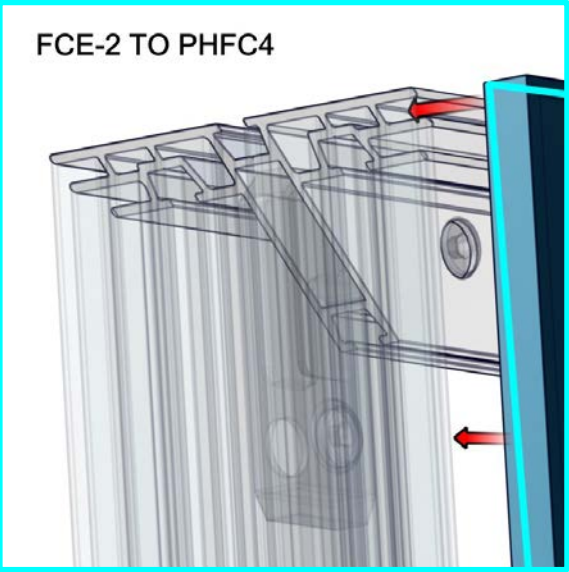
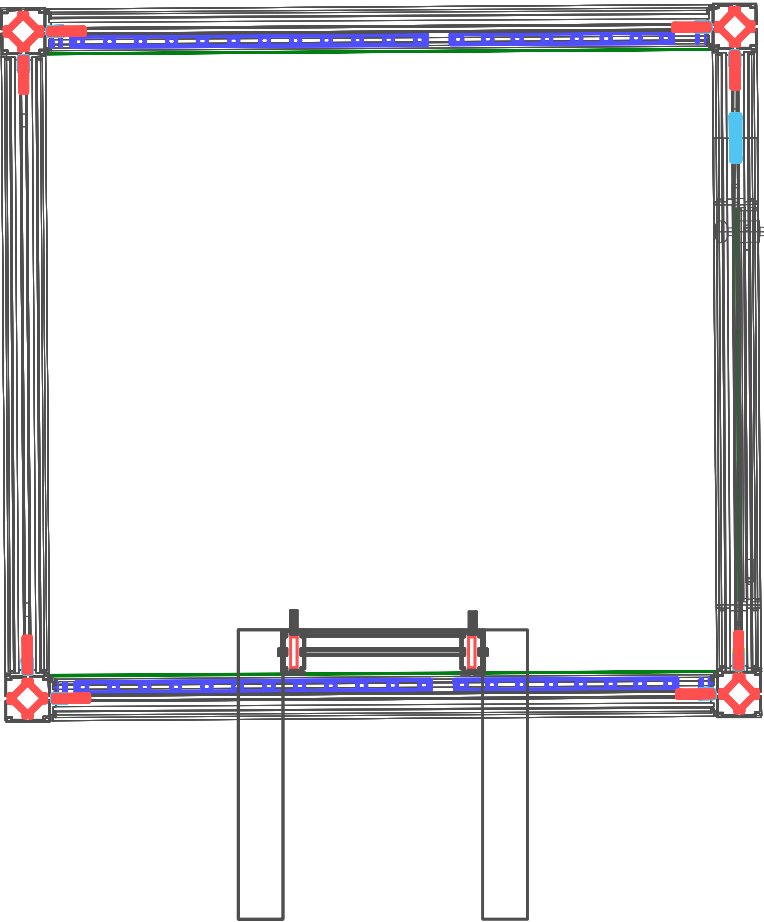
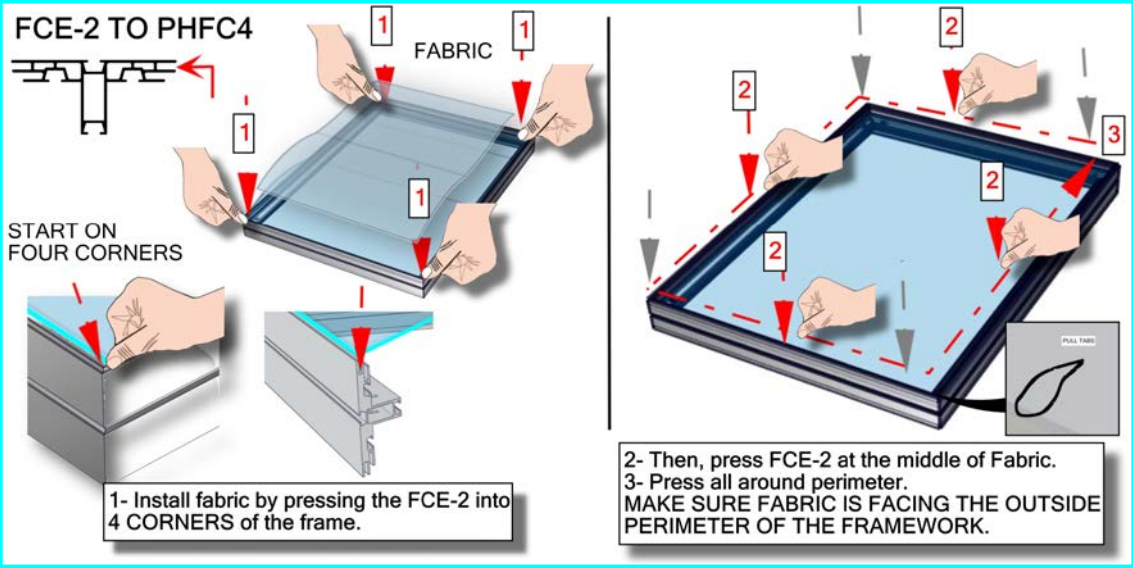
Code	#	Description
A1	4	1200MM OF PM4S2 EXTRUSION -WITH STOPS BOTH SIDES
A2	3	600MM 4-WAY INTERNAL CONNECTION EXTRUSION W/ 8 TENSION GLIDE
A24	2	1186MM CUT DOWN FROM 1200MM LENGTH OF FC EXTRUSION
CUS-SW-FOO	1	650MM SMART WALL FOOT **CUT OFF BOTTOM FOOT PORTION TO CREATE DECORATIVE PLATE**



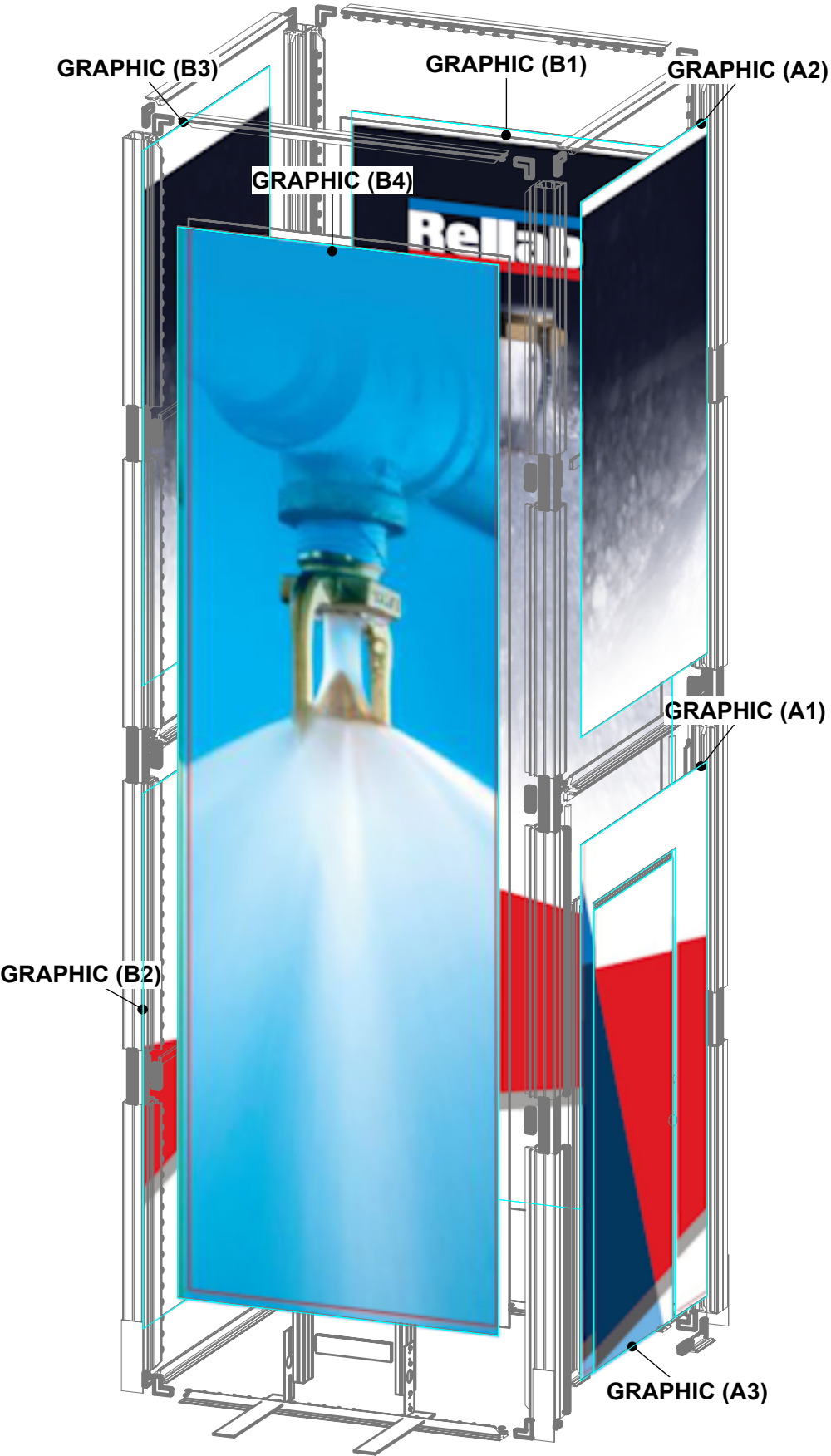
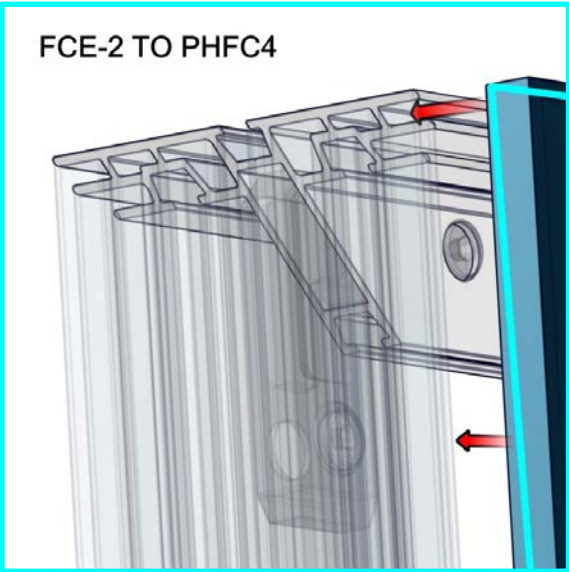
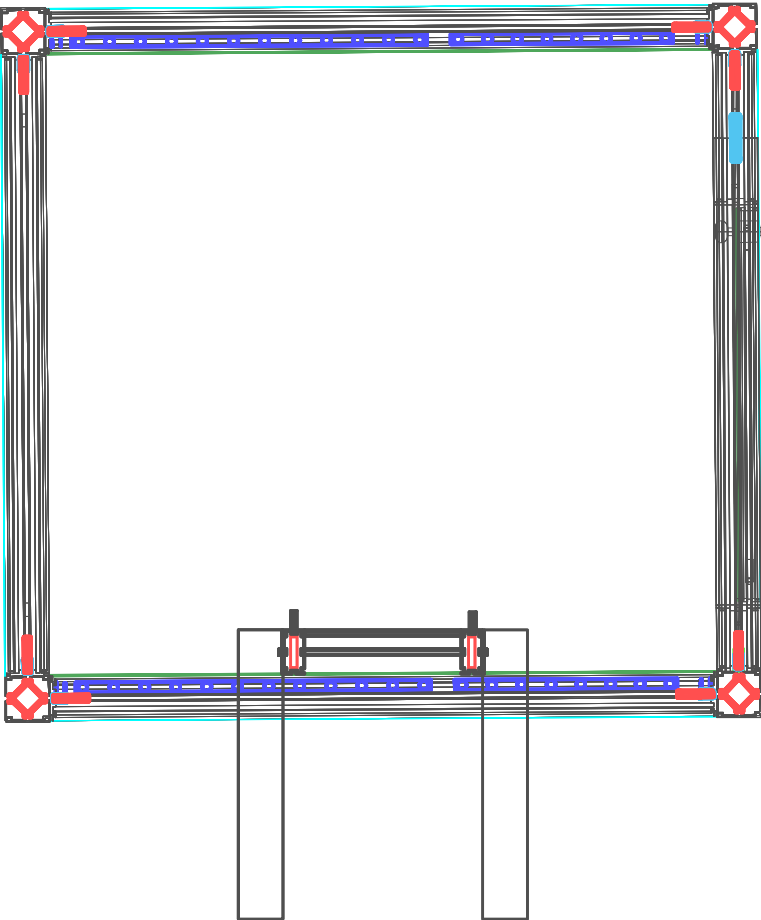
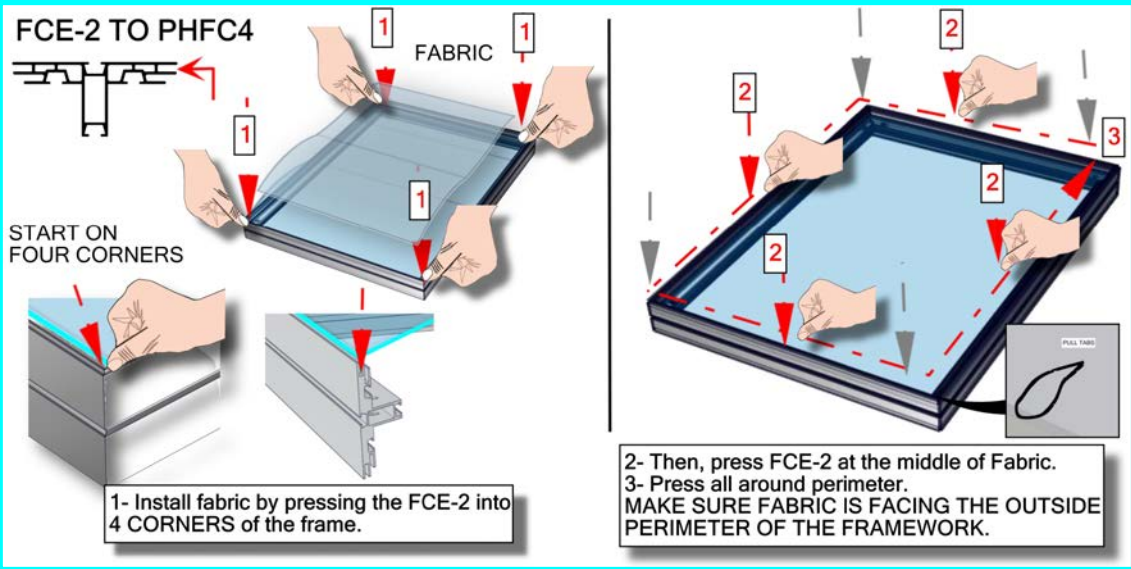
Code	#	Description
VF-FCDOOR-1	1	VECTOR FRAME FABRIC CHANNEL DOOR, 1200MM W X 2400MM H FRAME, RIGHT(2 PC DOOR)
A20	2	200MM CUT DOWN FROM 300MM LENGTH OF PHFC4 EXTRUSION-WITH MITRE CUT FOR CB9 ONE END-IB2 LOCK HOLE ONE END
CBE-50	2	CORNER PRESSURE FIT CONNECTOR
A3	2	1200MM LENGTH OF PHFC4 EXTRUSION-WITH MITRE CUT FOR CB9 ONE END-IB2 LOCK HOLE ONE END-WITH SIDE LOCKS
A23	2	1155MM CUT DOWN FROM 1200MM LENGTH OF PH EXTRUSION-WITH IB2 LOCK HOLES ONE SIDE-SL
A32	2	210MM (8.27") PH1 EXTRUSION WITH LOCKS 2 ENDS
A33	2	105MM (4.13") PH1 EXTRUSION WITH LOCKS 2 ENDS
A34	1	X1200MM (47.24") PHFC4 EXTRUSION WITH CAM LOCKS BOTH ENDS
IB2-O	4	JOINER BAR (OLD STYLE)
CB9	2	90 DEGREE JOINER



Code	#	Description
UNPRINTED (A3)	1	(38.76 w X 85.38 h total size) 34.76 w X 81.38 h finish size, Unprinted Eclipse Blockout Stretch, sewn with FCE-2 silicone
LINER (B4)	1	(62.94 w X 192.86 h total size) 58.94 w X 188.86 h finish size, Opaque Liner, sewn with FCE-2 silicone beading around per
LINER (B1	1) (62.94 w X 192.86 h total size) 58.94 w X 188.86 h finish size, Opaque Liner, sewn with FCE-2 silicone beading around pe

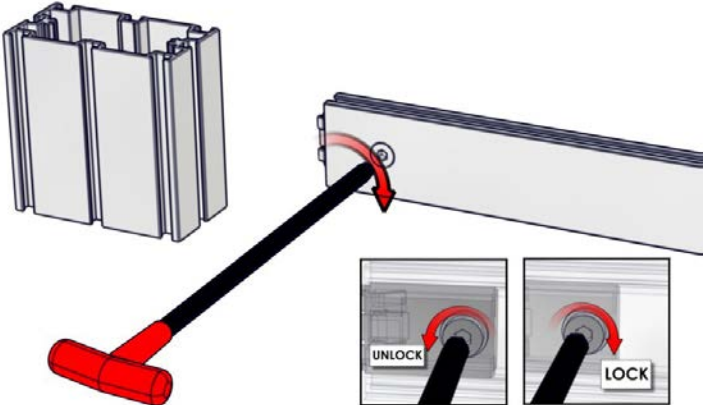


Code	#	Description
GRAPHIC (B2)	1	(59.00 w X 98.37 h total size) 55.00 w X 94.37 h finish size, Dye-sub print on Eclipse Blockout Stretch, s
GRAPHIC (A3)	1	(38.76 w X 85.38 h total size) 34.76 w X 81.38 h finish size, Dye-sub print on Eclipse Blockout Stretch, s
GRAPHIC (B4)	1	(62.94 w X 192.86 h total size) 58.94 w X 188.86 h finish size, UV/LED print on Backlit Intensity, single s
GRAPHIC (B1)	1	(62.94 w X 192.86 h total size) 58.94 w X 188.86 h finish size, UV/LED print on Backlit Intensity, single s
GRAPHIC (A1)	1	(59.00 w X 98.37 h total size) 55.00 w X 94.37 h finish size, Dye-sub print on Eclipse Blockout Stretch, s
GRAPHIC (B3)	1	(59.00 w X 98.37 h total size) 55.00 w X 94.37 h finish size, Dye-sub print on Eclipse Blockout Stretch, s
GRAPHIC (A2)	1	(59.00 w X 98.37 h total size) 55.00 w X 94.37 h finish size, Dye-sub print on Eclipse Blockout Stretch, s

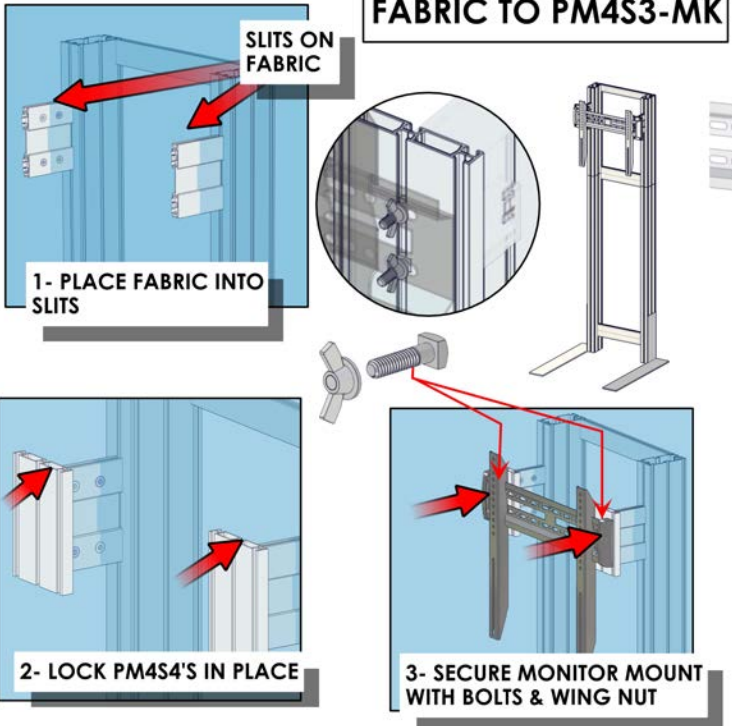
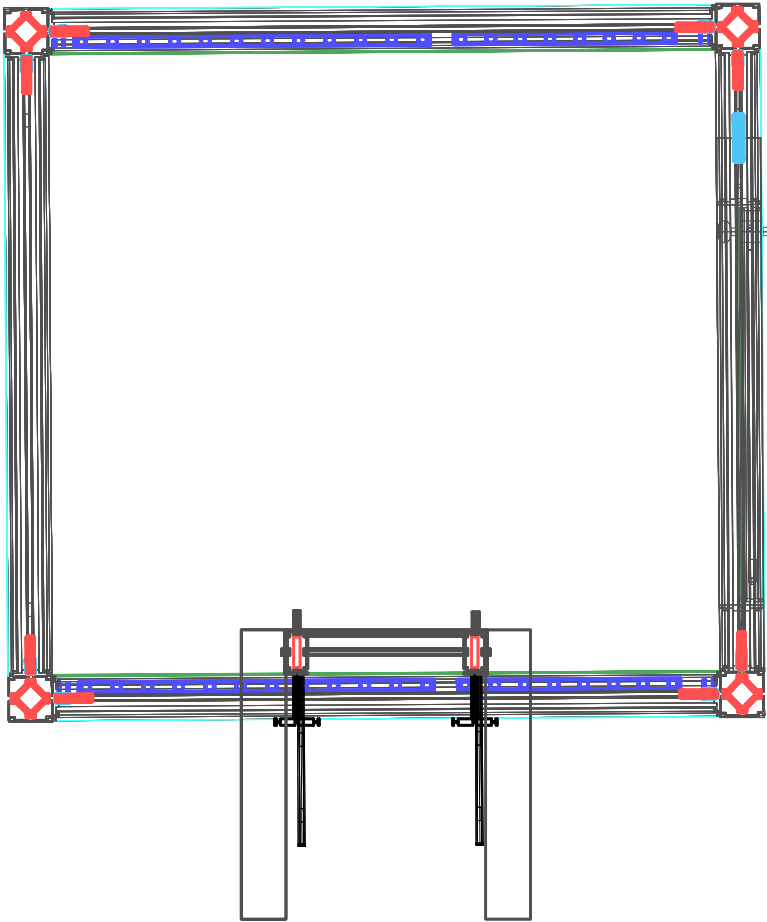


Code	#	Description
A28	2	380MM LENGTH OF PH EXTRUSION FOR MK SHELF-WITH CAM LOCKS-SIDE LOCKS
LN605-EN-BLACK	2	MOLDED BLACK PLASTIC END-CAP FOR PH
A35	2	150MM PS4S4 EXTRUSION
A36	2	100MM CUT DOWN FROM 300MM LENGTH OF PH5 EXTRUSION-WITH CAM LOCKS-WITH CAM LOCKS

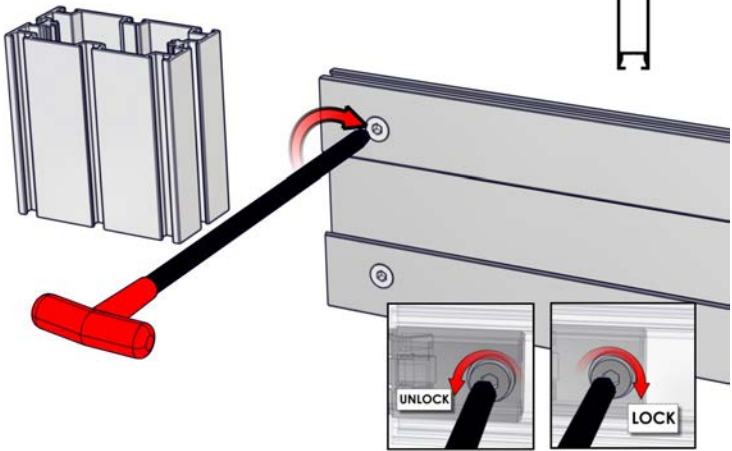
WARNING!
Locks should **ONLY**
be turned a quarter turn, so
as not to **STRIP** the locks by
over torquing them



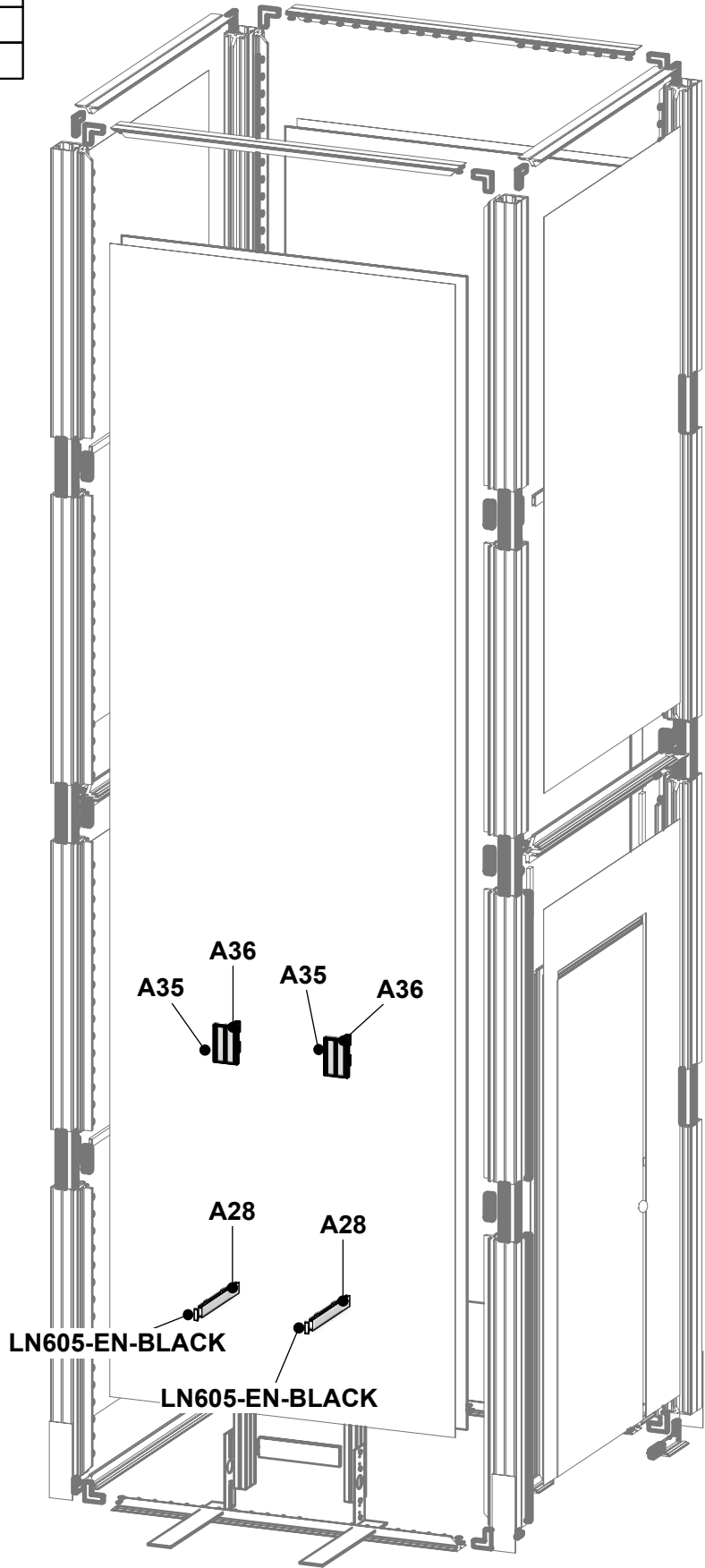
LOCK EXTRUSION BY USING 5MM ALLEN KEY



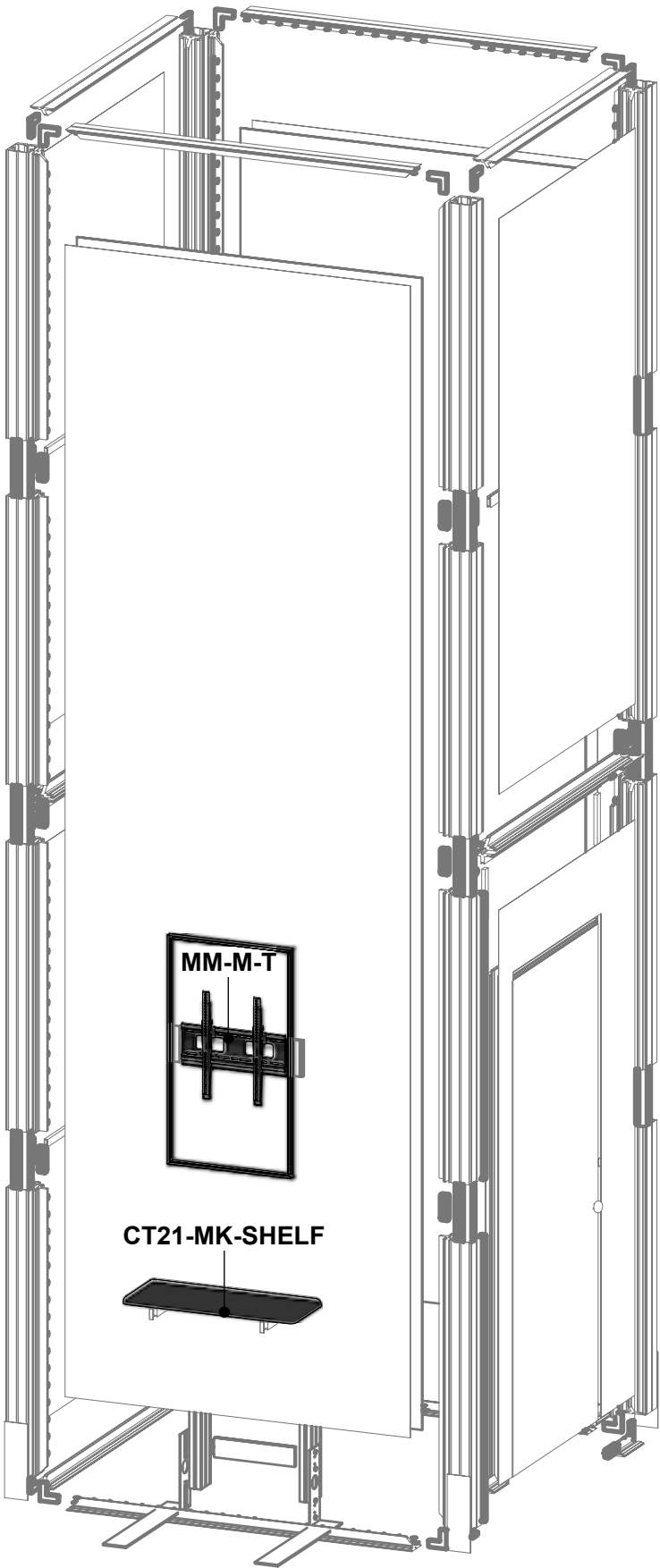
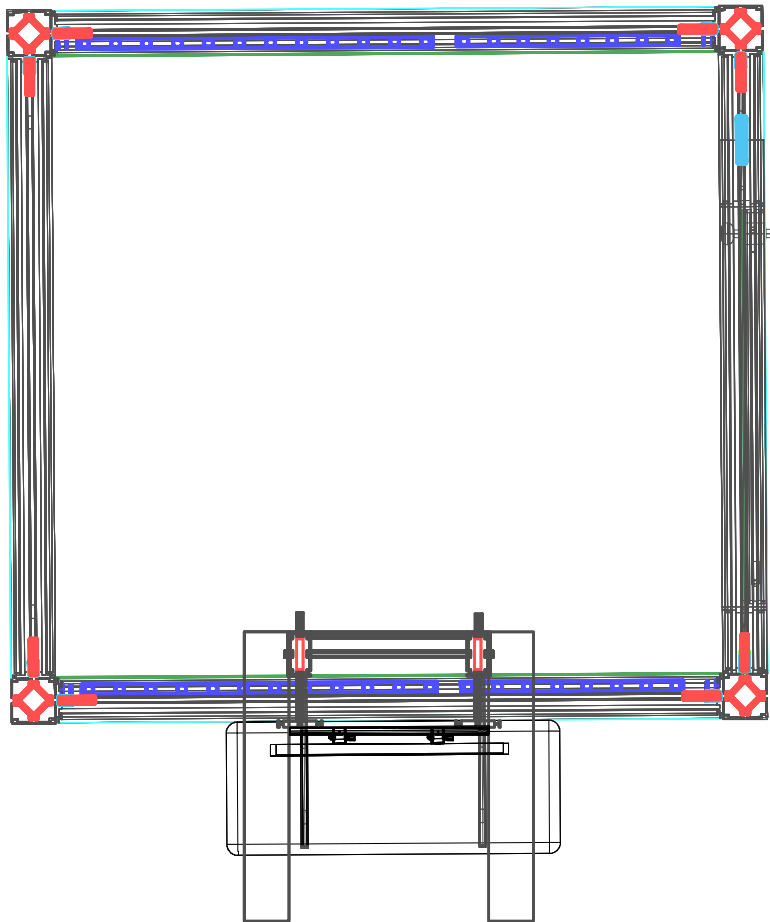
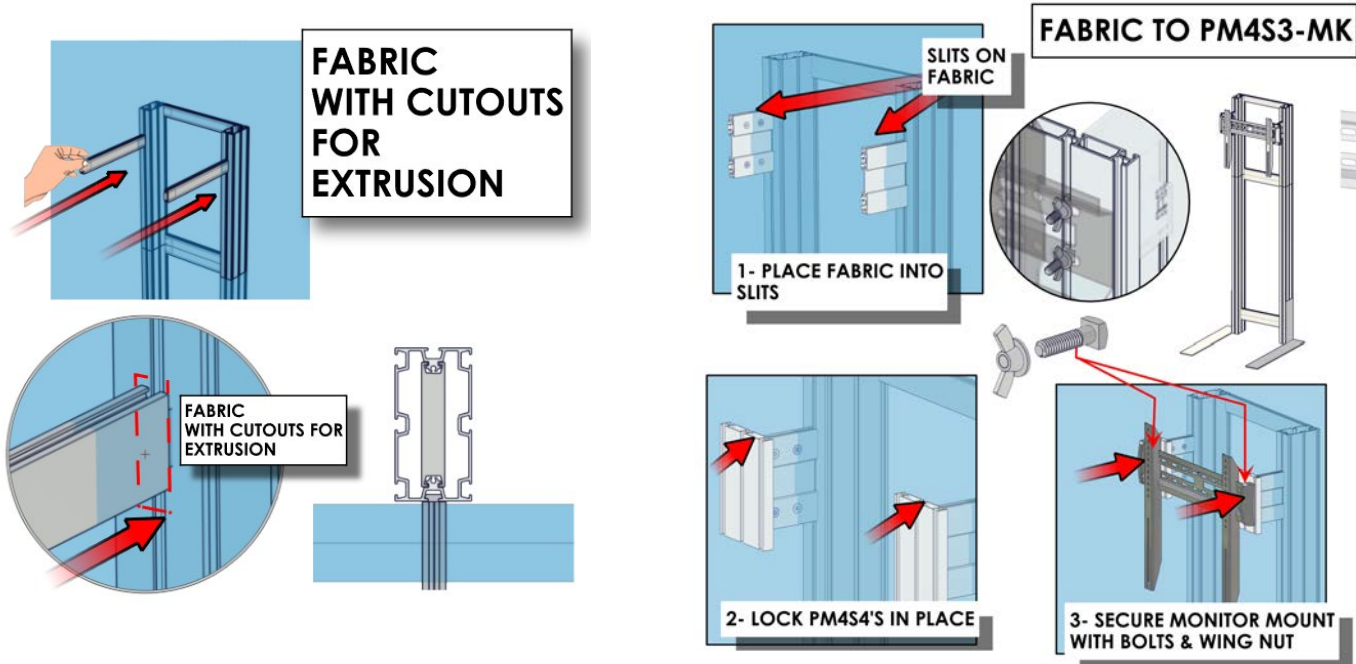
WARNING!
Locks should **ONLY**
be turned a quarter turn, so
as not to **STRIP** the locks by
over torquing them



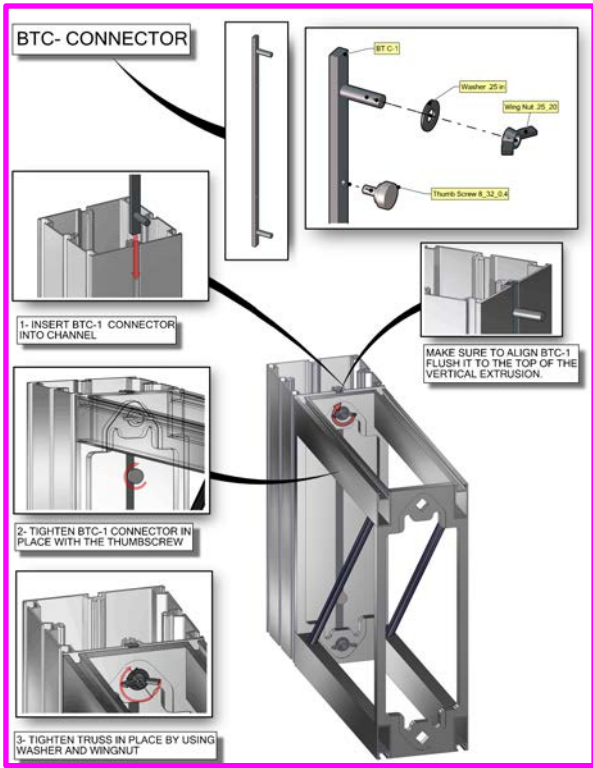
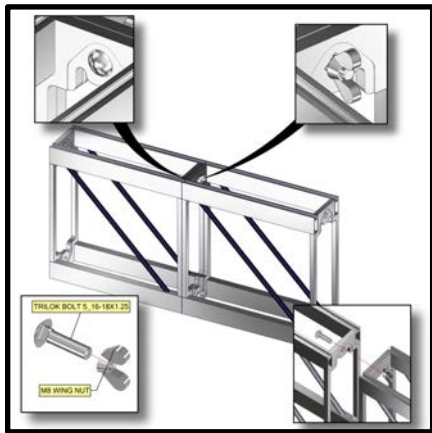
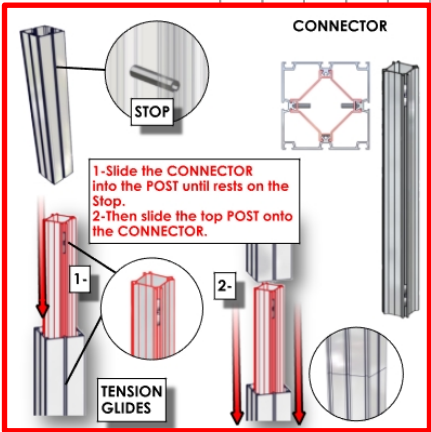
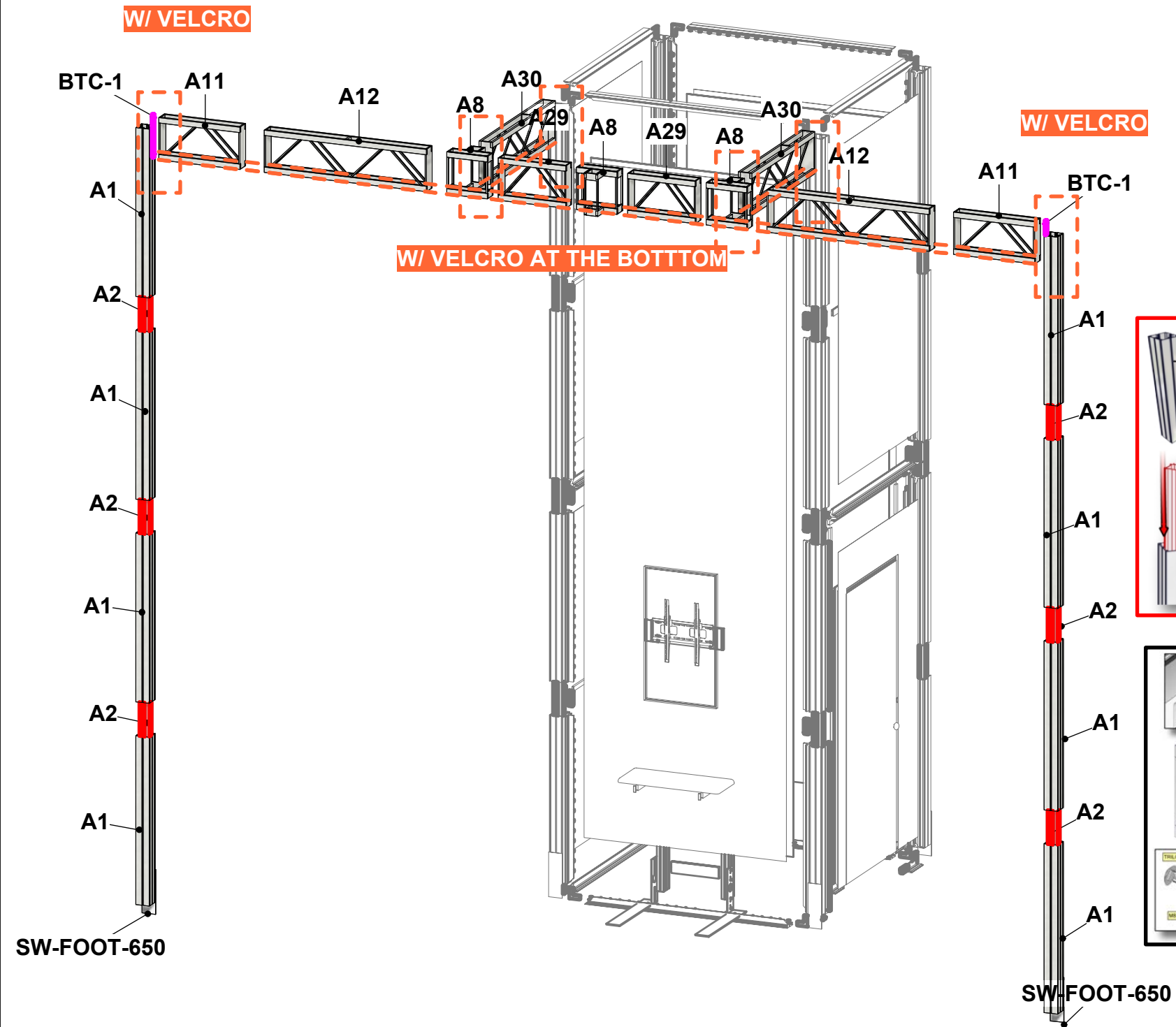
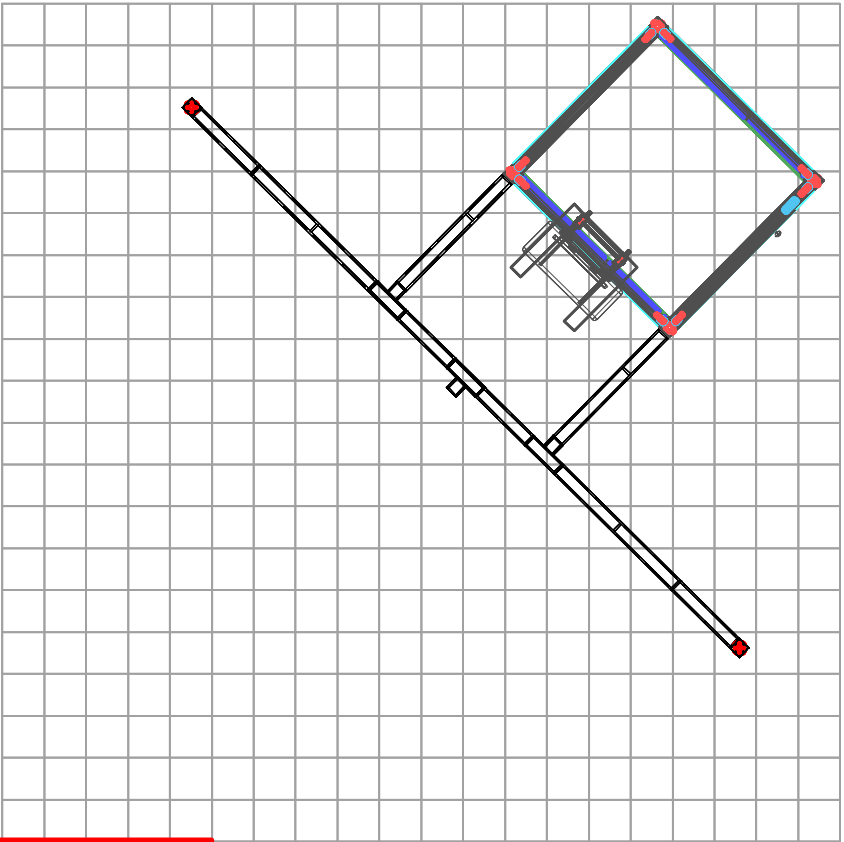
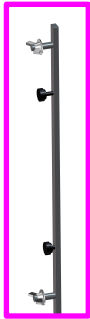
LOCK EXTRUSION BY USING 5MM ALLEN KEY



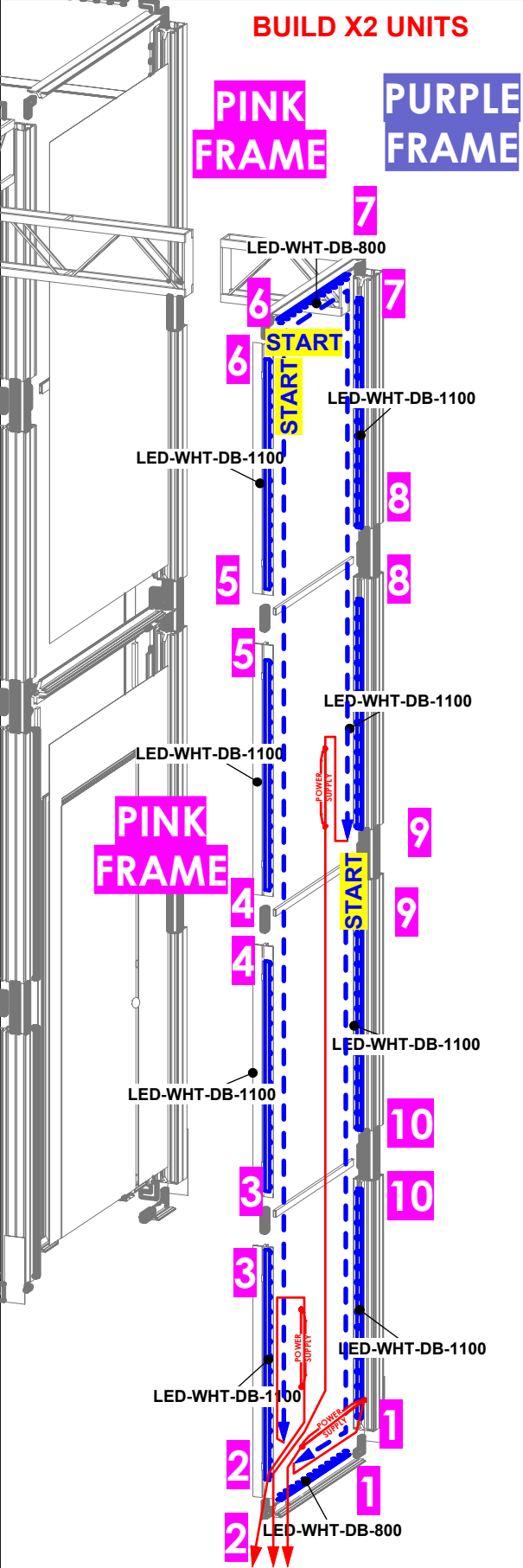
Code	#	Description
PE-260	2	260MM CUT DOWN FROM 300MM LENGTH OF PE EXTRUSION
CT21-MK-SHE	1	750MM X 300MM X 30MM MONITOR KIT SHELF
EXT-M-MB	1	Medium size LCD Monitor mount, 32"-55" size,Tilting-with extrusion mounted hardware
MM-M-T	1	EXTRUSION MOUNTED MEDIUM MONITOR BRACKET AND MOUNTING HARDWARE



Code	#	Description
SW-FOOT-650	2	650MM SMART WALL FOOT
A1	8	1200MM OF PM4S2 EXTRUSION -WITH STOPS BOTH SIDES
A2	6	600MM 4-WAY INTERNAL CONNECTION EXTRUSION W/ 8 TENSION GLIDE
BTC-1	2	BOLD TRUSS TO EXTRUSION CONNECTOR
A8	3	3 WAY MILL FINISH BOLD TRUSS
A12	2	1200MM MILL FINISH BOLD TRUSS STRAIGHT
A11	2	600MM MILL FINISH BOLD TRUSS STRAIGHT
A29	2	CUSTOM 500MM MILL FINISH BOLD TRUSS STRAIGHT
A30	2	CUSTOM 1100MM MILL FINISH BOLD TRUSS STRAIGHT



Code	#	Description
LED-WHT-DB-1100	16	1100MM EDGE-LIT STRIP, 1.7W/LED
LED-WHT-DB-800	4	800MM EDGE-LIT STRIP, 1.7W/LED



LED-WHT-DB-1100 LIGHTS

1 ASSEMBLE FRAME

2 INSTALL LIGHTING STRIPS

3 CONNECT LIGHTING STRIPS

4 CONNECTING END LINE JACK TO POWER SUPPLY

IMPORTANT!
4 LIGHTING STRIPS MAXIMUM PER POWER SUPPLY

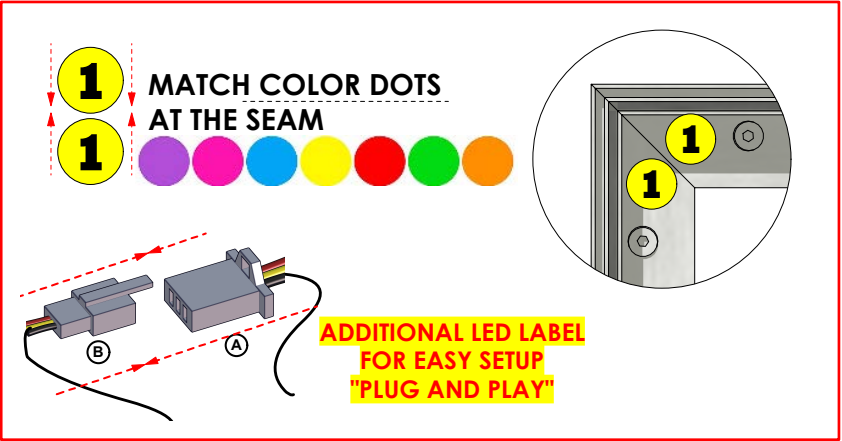
END LINE CONNEPOWER SUPPLYR SUPPLY

LED POWERSUPPLY AD-EL-2401200 100 W

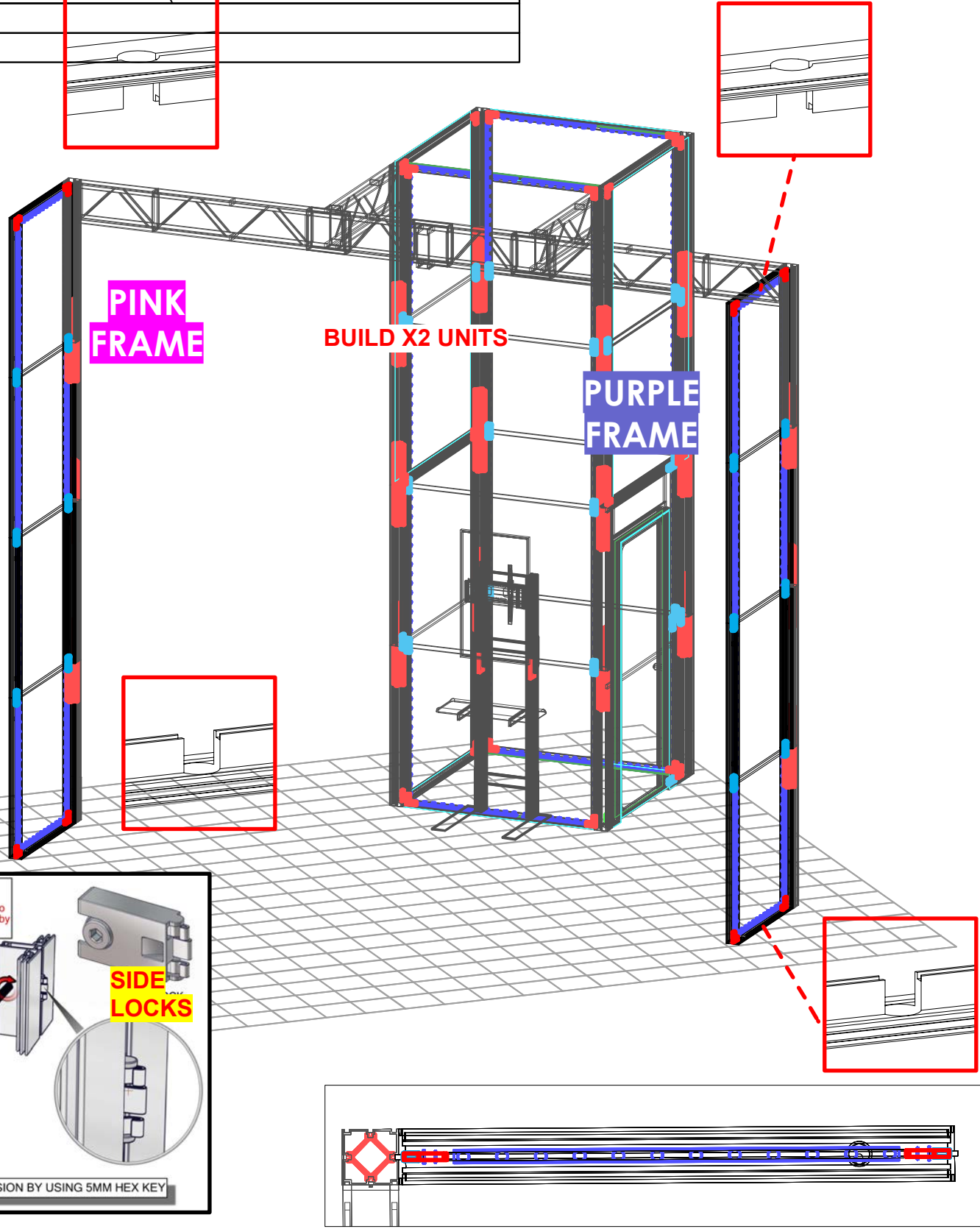
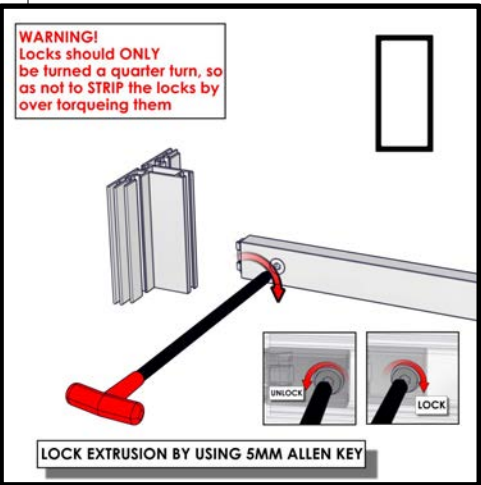
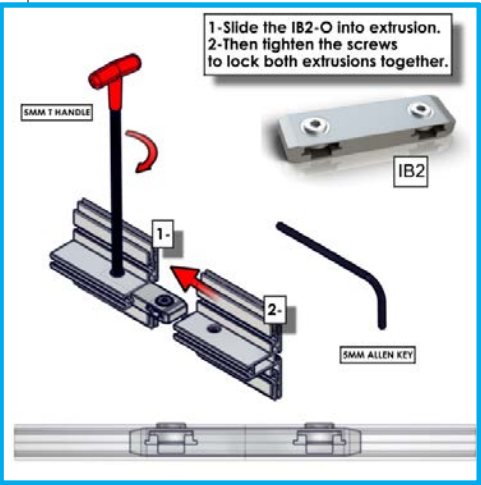
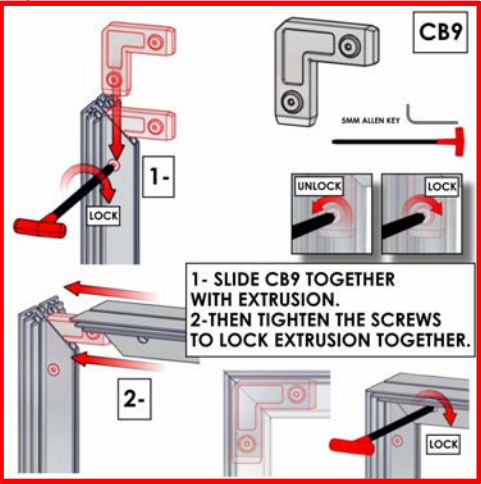
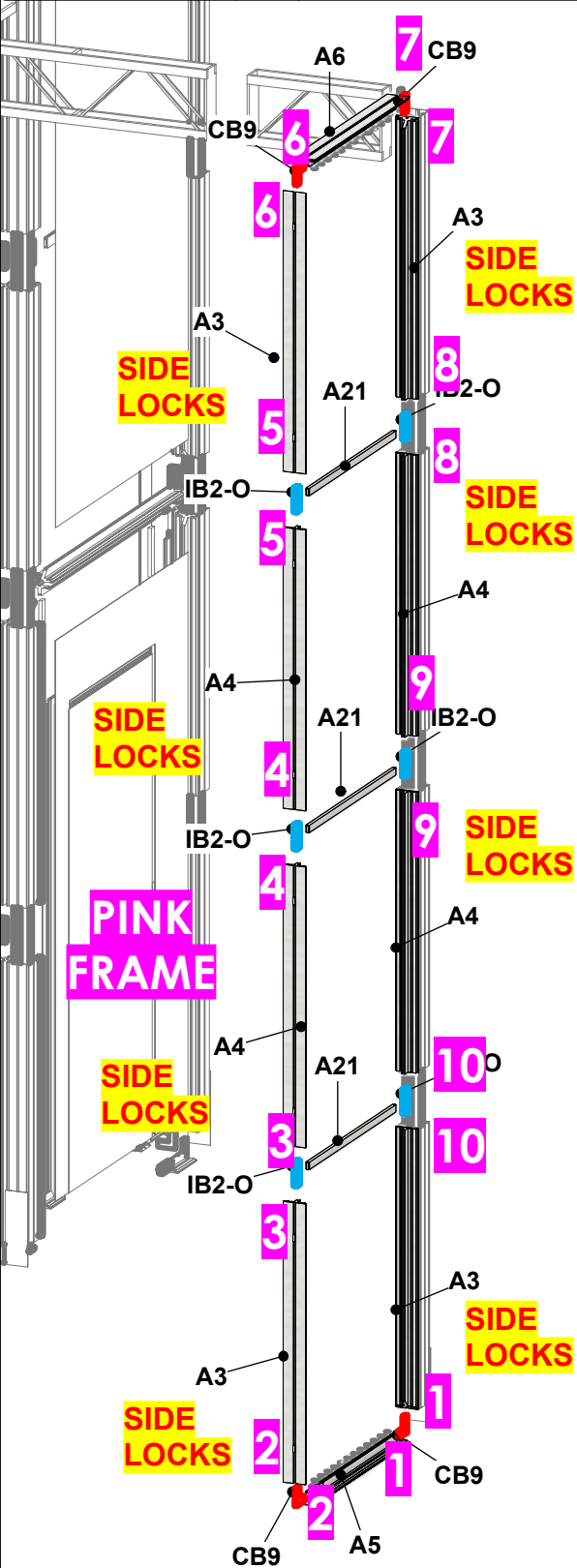
LED-DB-PWRCORD-2

HARDWARE

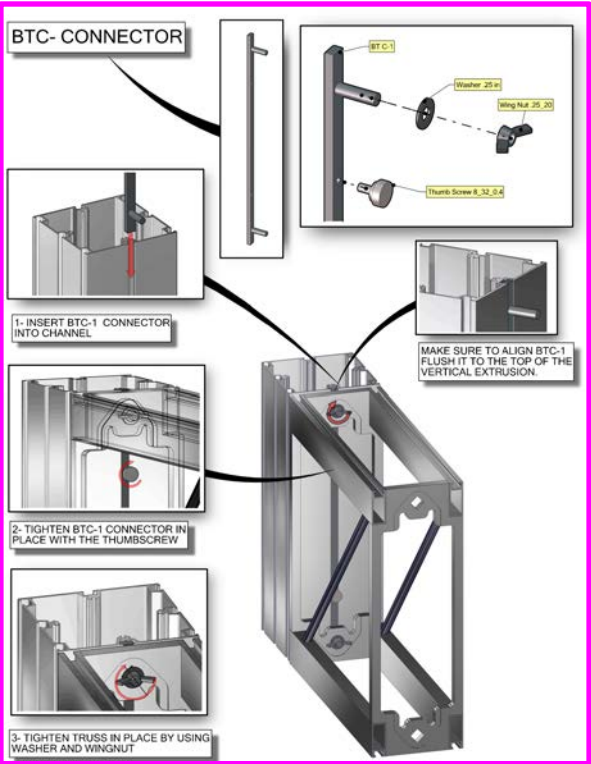
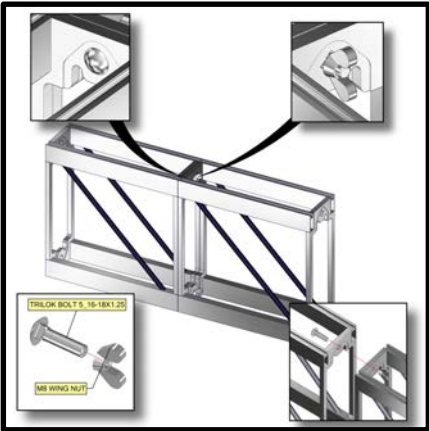
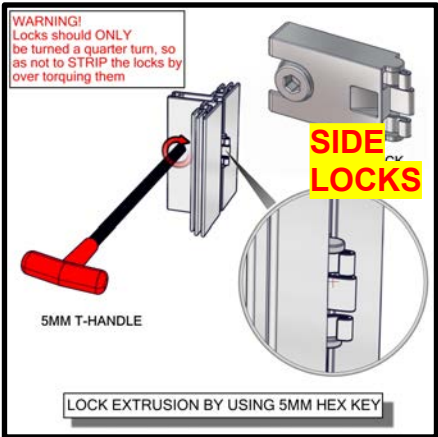
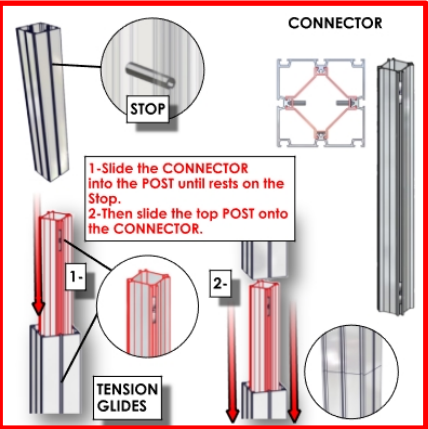
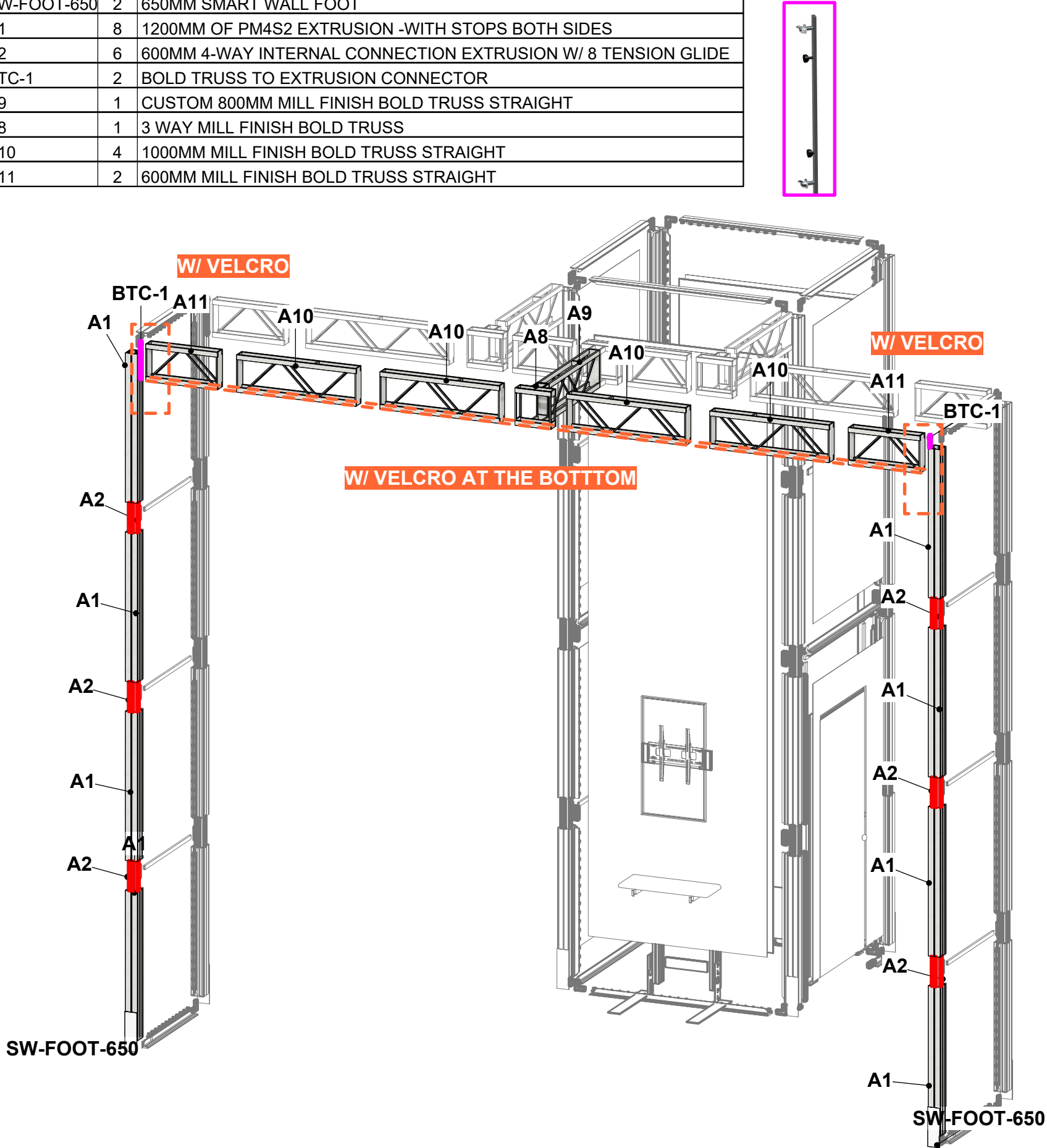
LED-DB-THBSCRW
LED-DT-TGL



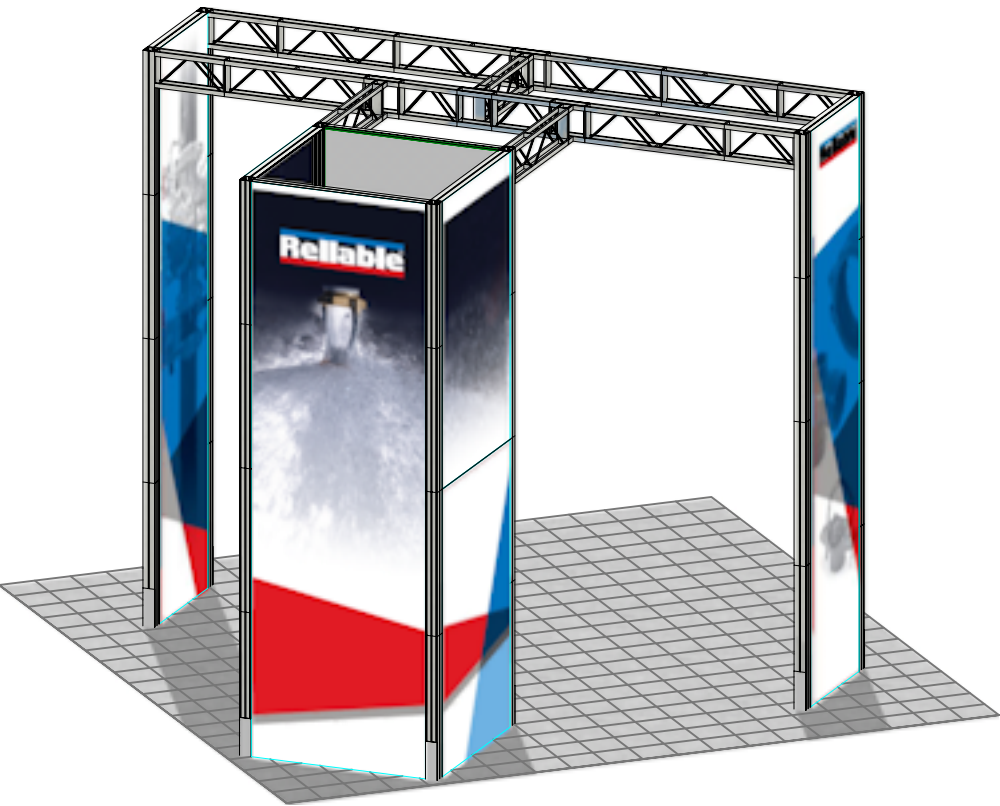
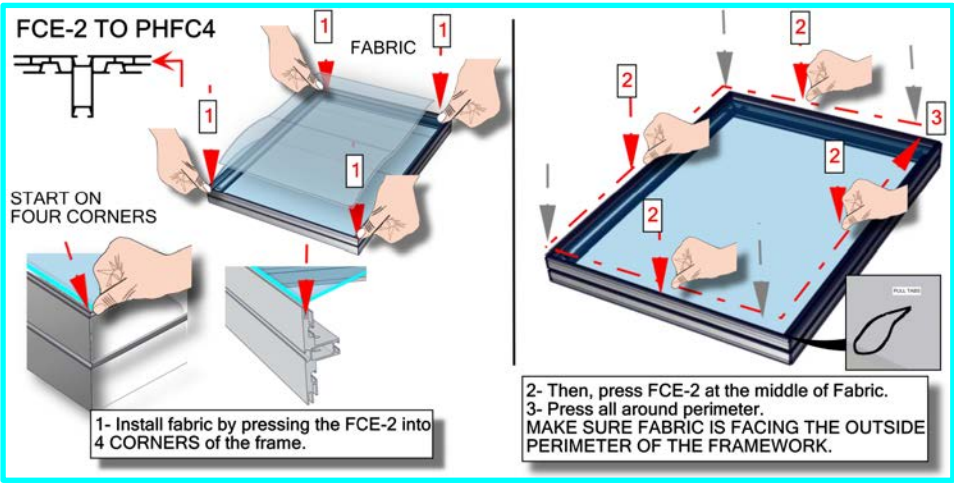
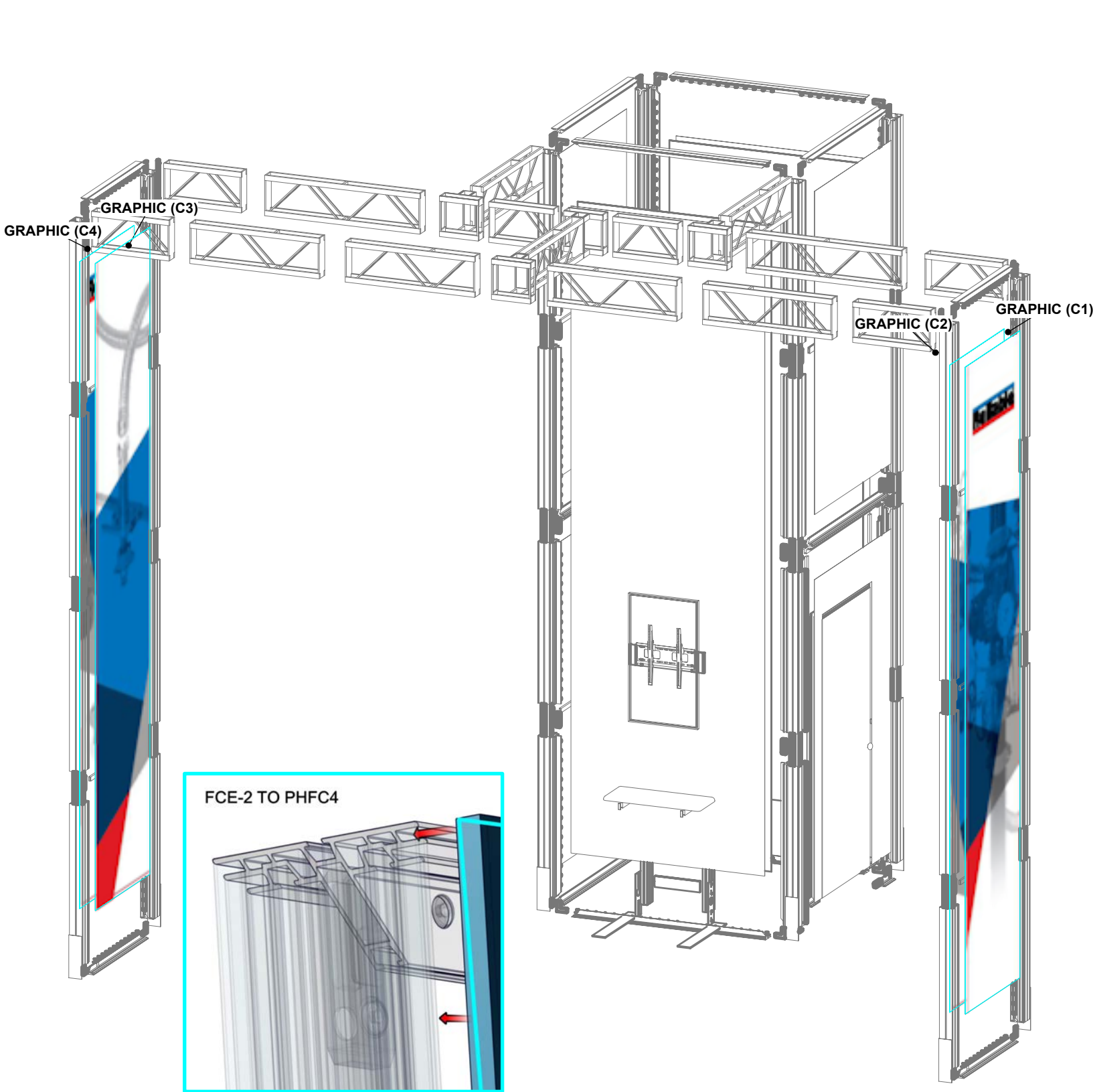
Code	#	Description
A3	8	1200MM LENGTH OF PHFC4 EXTRUSION-WITH MITRE CUT FOR CB9 ONE END-IB2 LOCK HOLE ONE END-WITH SIDE LOCKS
A4	8	1200MM LENGTH OF PHFC4 EXTRUSION-WITH IB2 LOCK HOLES BOTH ENDS-WITH SIDE LOCKS
A5	2	1000MM LENGTH OF PHFC4 EXTRUSION-WITH MITRE CUT BOTH ENDS-WITH GROMMET HOLE
A6	2	1000MM LENGTH OF PHFC4 EXTRUSION-WITH MITRE CUT BOTH ENDS WITH GROMMET HOLE
A21	6	910MM CUT DOWN FROM 1200MM LENGTH OF PH1 EXTRUSION-WITH SLIDE LOCKS BOTH ENDS (LAMINATED: WILSONART DESIGNER
IB2-O	12	JOINER BAR (OLD STYLE)
CB9	8	90 DEGREE JOINER



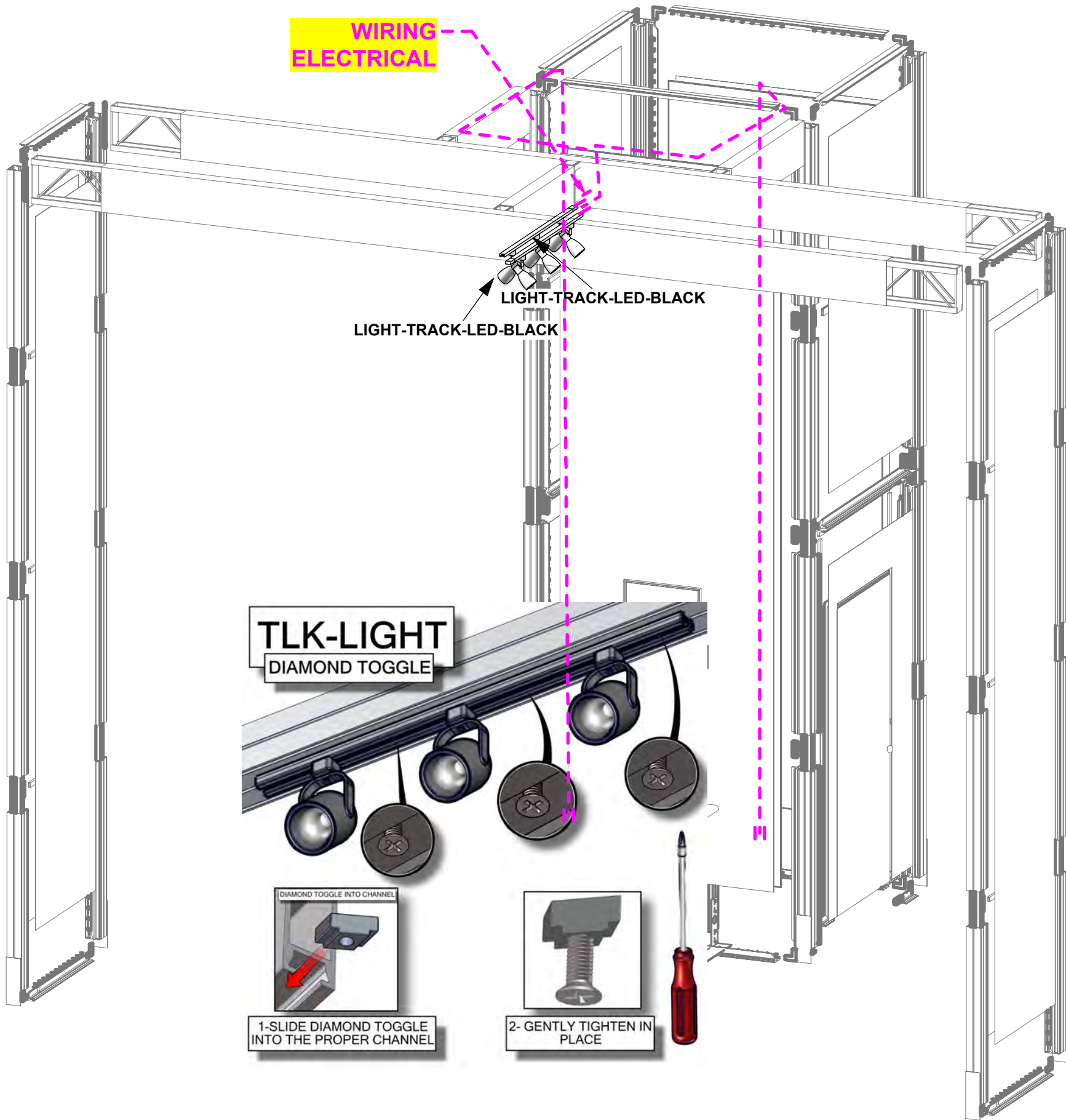
Code	#	Description
SW-FOOT-650	2	650MM SMART WALL FOOT
A1	8	1200MM OF PM4S2 EXTRUSION -WITH STOPS BOTH SIDES
A2	6	600MM 4-WAY INTERNAL CONNECTION EXTRUSION W/ 8 TENSION GLIDE
BTC-1	2	BOLD TRUSS TO EXTRUSION CONNECTOR
A9	1	CUSTOM 800MM MILL FINISH BOLD TRUSS STRAIGHT
A8	1	3 WAY MILL FINISH BOLD TRUSS
A10	4	1000MM MILL FINISH BOLD TRUSS STRAIGHT
A11	2	600MM MILL FINISH BOLD TRUSS STRAIGHT



Code	#	Description
GRAPHIC (C1)	1	(43.25 w X 192.86 h total size) 39.25 w X 188.86 h finish size, UV/LED print on Backlit Intensity, single sided, sewn with silicone beading around perimeter & pull tab in
GRAPHIC (C2)	1	(43.25 w X 192.86 h total size) 39.25 w X 188.86 h finish size, UV/LED print on Backlit Intensity, single sided, sewn with silicone beading around perimeter & pull tab in
GRAPHIC (C4)	1	(43.25 w X 192.86 h total size) 39.25 w X 188.86 h finish size, UV/LED print on Backlit Intensity, single sided, sewn with silicone beading around perimeter & pull tab in
GRAPHIC (C3)	1	(43.25 w X 192.86 h total size) 39.25 w X 188.86 h finish size, UV/LED print on Backlit Intensity, single sided, sewn with silicone beading around perimeter & pull tab in



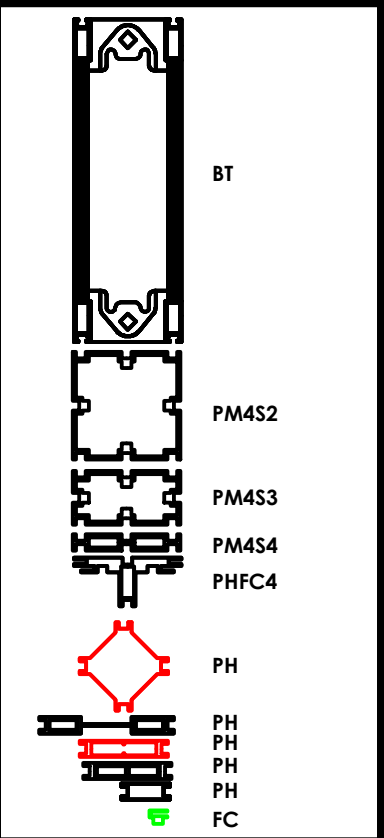
Code	#	Description
LIGHT-TRACK	2	STEP BAFFLE 44.5" 3-LIGHT WHITE LED TRACK LIGHTING (BLACK)



1. Redesign of this exhibit without approval by Nimlok may result in dangerous and unsafe structures. Nimlok disclaims any responsibility for redesigned exhibits it does not approve in writing.

2. Parts and components such as panels and extrusions are manufactured to metric sizing. Where ever possible sizes have been noted in feet and inches as well as in metric. Below is the imperial to metric sizing table as reference. "Nominal" refers to approximate size.

2400mm = (94 1/2")	Phone Line / Fax
2100mm = (82 5/8")	Internet connection
1800mm = (70 7/8")	Outlet
1500mm = (59")	Main Drop (point of distribution)
1200mm = (47 1/4")	Wire running under carpet
900mm = (35 1/2")	
600mm = (23 5/8")	
300mm = (11 7/8")	



Client:
AMPM RELIABLE

Distributor Contact:NIMLOK MICHIGAN



EMERGENCY #:(616)233-9401

Project Manager:KEVON O'DWYER


Detailer:EDGAR SANCHEZ

Order #: 1522046

Title: SET-UP INSTRUCTIONS



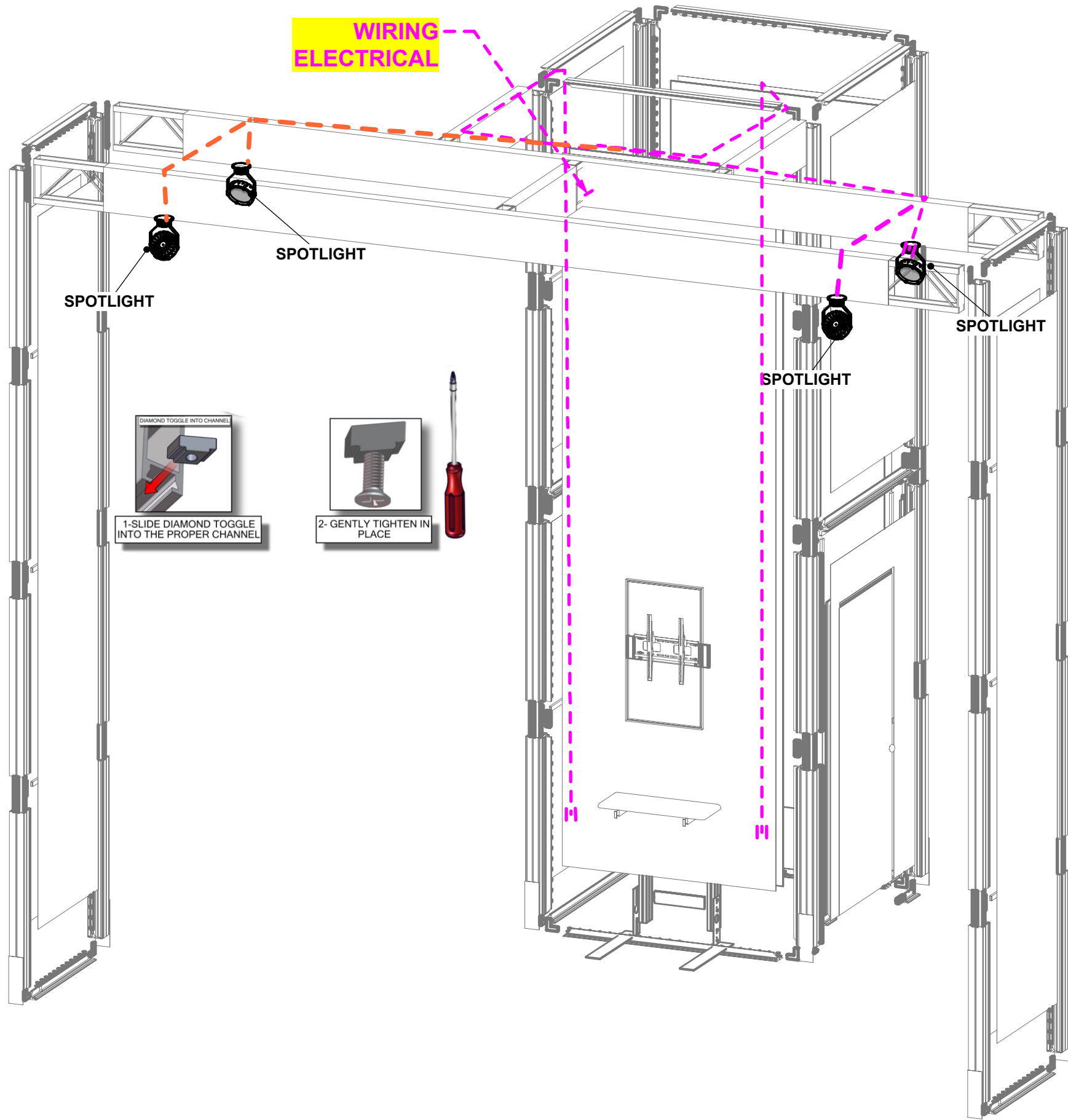
DQS Inc.
ORBUS, LLC
ISO 9001: 2015
ISO 14001: 2015
10009274 & 10011571



Caution
sharp edges
on metal parts

18A

	Code	#	Description
	SPOTLIGHT	4	SPOTLIGHT



Spotlights

Attach square head bolt to under side of truss. Attach spotlight with wingnut.



Cords & Plugs

There's an extra cord (light to light) for each set of lights. The extras have been zip-tied and have labels saying "DO NOT USE."

Do not cut the zip ties.

One power cord per set of 2 spotlights.



RNG-0804

SET UP INSTRUCTIONS:

1. CONNECT BOTTOM AND TOP TUBES FOLLOWING THE LABELS
2. CONNECT SIDE TUBES
3. CLEAN THE FRAME AND PLACE THEM ON CLEAN PLACE
4. CAREFULLY REMOVE FABRIC COVER FROM BAG
5. PLACE COVER AROUND THE BOTTOM OF THE FRAME
6. PULL COVER CAREFULLY UP TO THE TOP
7. CLOSE ALL ZIPPERS
8. ADJUST FABRIC AROUND THE FRAME
9. CONNECT CABLE HARNESS TO THE EYEBOLTS
10. COMPLETELY TIGHTEN THREADED CONNECTORS

BREAK DOWN INSTRUCTIONS:

REVERSE SET-UP STEPS TO BREAKDOWN FRAME

FABRIC CARE INSTRUCTIONS:

1. UNZIP COVER ZIPPERS
2. CAREFULLY REMOVE FABRIC COVER
3. CLOSE ALL ZIPPERS
4. FOLD OR ROLL NEATLY
5. PLACE FABRIC IN COVER BAG

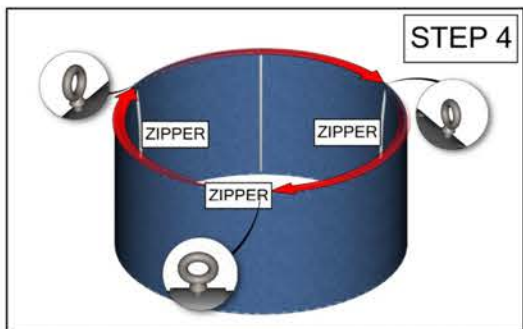
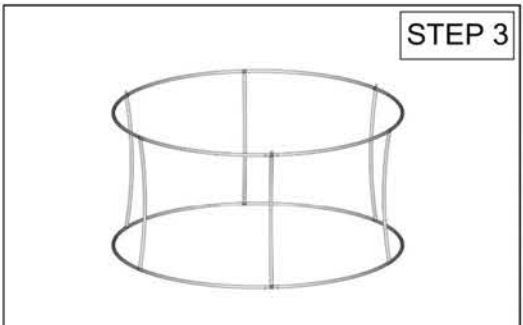
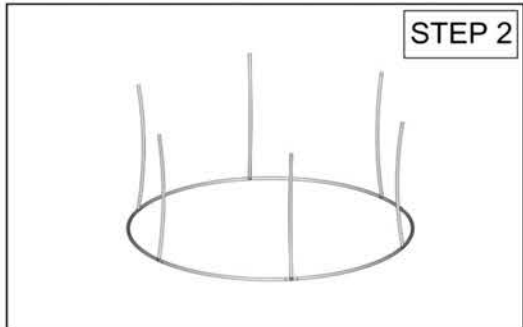
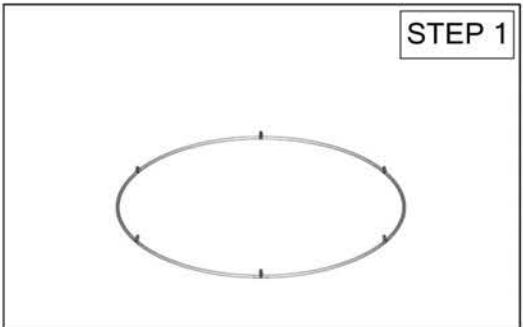
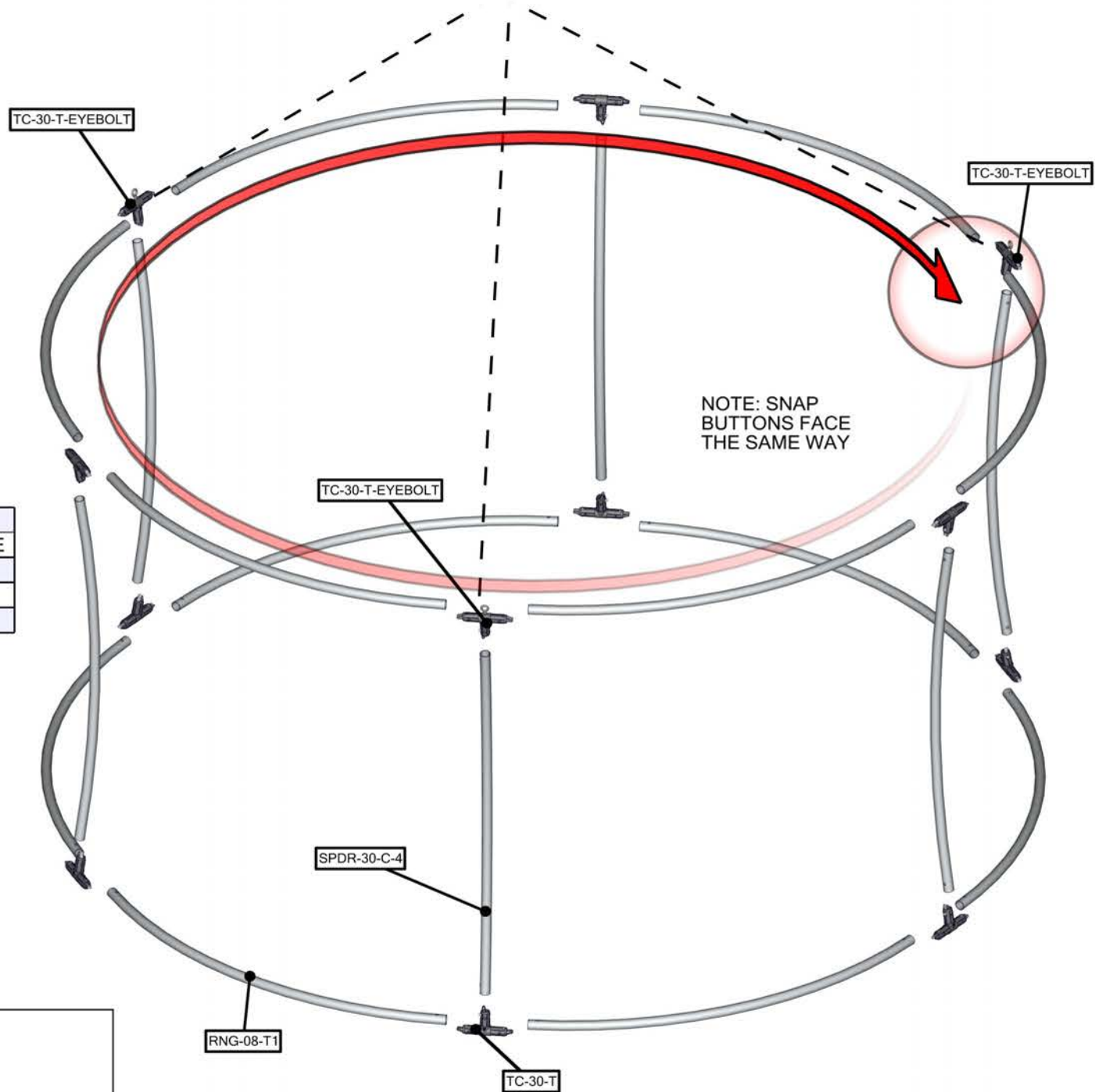
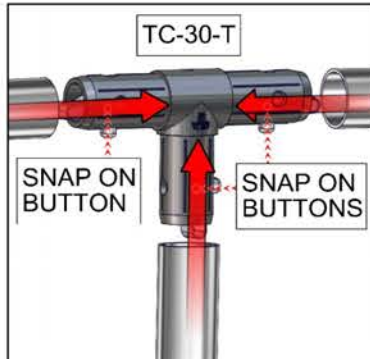
QTY	CODE	DESCRIPTION
12	RNG-08-T1	TUBE FOR 8' DIAMETER RING HANGING FABRIC STRUCTURE
6	SPDR-30-C-4	30MM CURVED SPREADER FOR
9	TC-30-T	T JUNCTION FOR 30MM TUBING
3	TC-30-T-EYEBOLT	T JUNCTION FOR 30MM TUBING

TOTAL WEIGHT:35.5 (lbs)

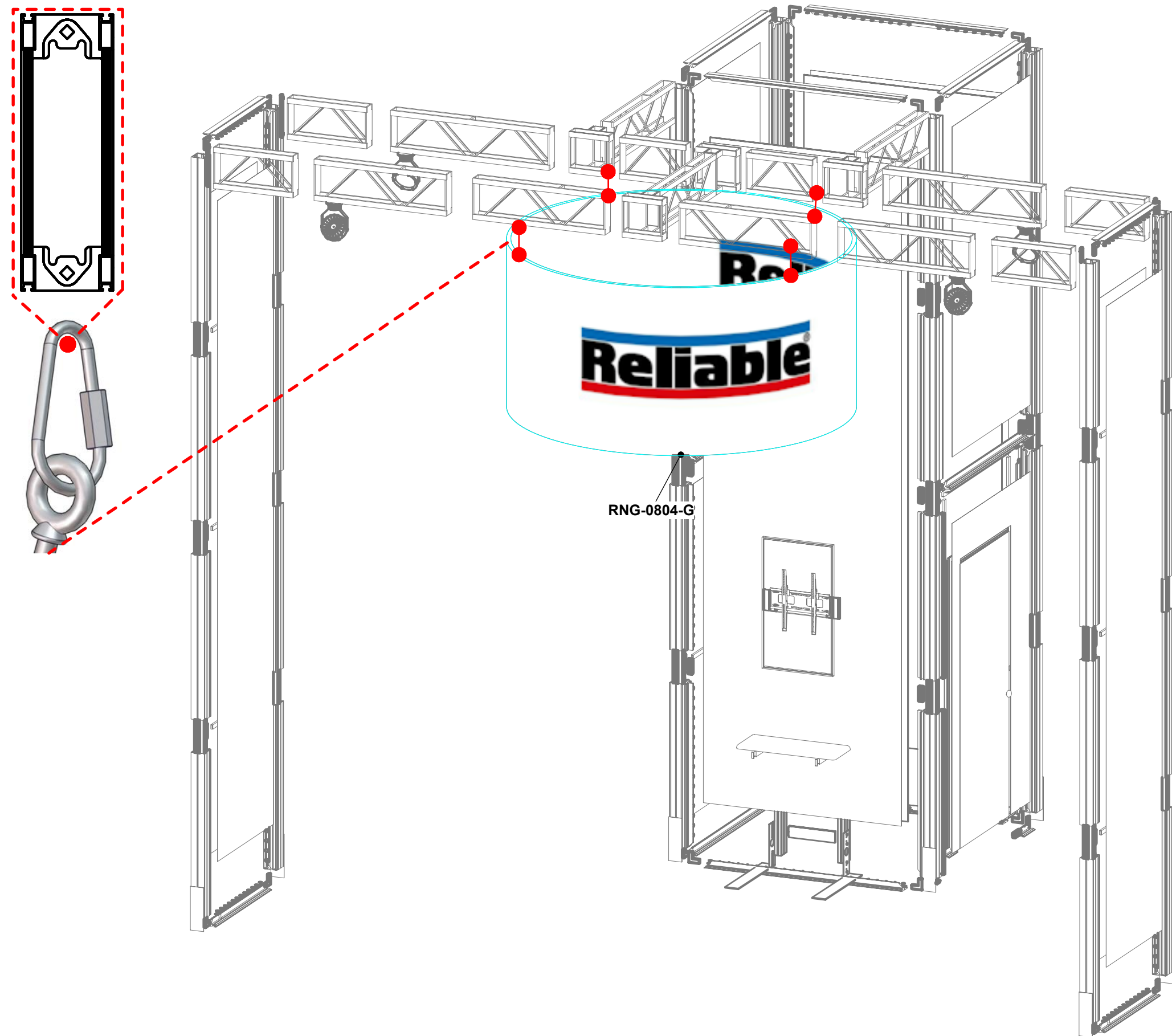
MAX SIZE:46.8 (in)

HARDWARE:19.7 (lbs)

GRAPHIC:13.9 (lbs)



	Code	#	Description
	RNG-0804-G	1	GRAPHIC (G1)(311.6"w X 58"h total size) 301.6"w X 48"h finished size, dye-s



Code	#	Description
GRAPHIC (D1)	1	(220.54 w X 31.56 h total size) 216.54 w X 27.56 h finish size, Dye-sub print on 5oz. Soft Knit, Oqaque Liner with 0.75 inch velcro on back side.
GRAPHIC (D2)	1) (220.54 w X 31.56 h total size) 216.54 w X 27.56 h finish size, Dye-sub print on 5oz. Soft Knit, Oqaque Liner with 0.75 inch velcro on back side.
GRAPHIC (E1)	1	(43.37 w X 31.56 h total size) 39.37 w X 27.56 h finish size, Dye-sub print on 5oz. Soft Knit, Oqaque Liner with 0.75 inch velcro on back side.
GRAPHIC (F1)	1	(51.24 w X 31.56 h total size) 47.24 w X 27.56 h finish size, Dye-sub print on 5oz. Soft Knit, Oqaque Liner with 0.75 inch velcro on back side.
GRAPHIC (F2)	1	(51.24 w X 31.56 h total size) 47.24 w X 27.56 h finish size, Dye-sub print on 5oz. Soft Knit, Oqaque Liner with 0.75 inch velcro on back side.

