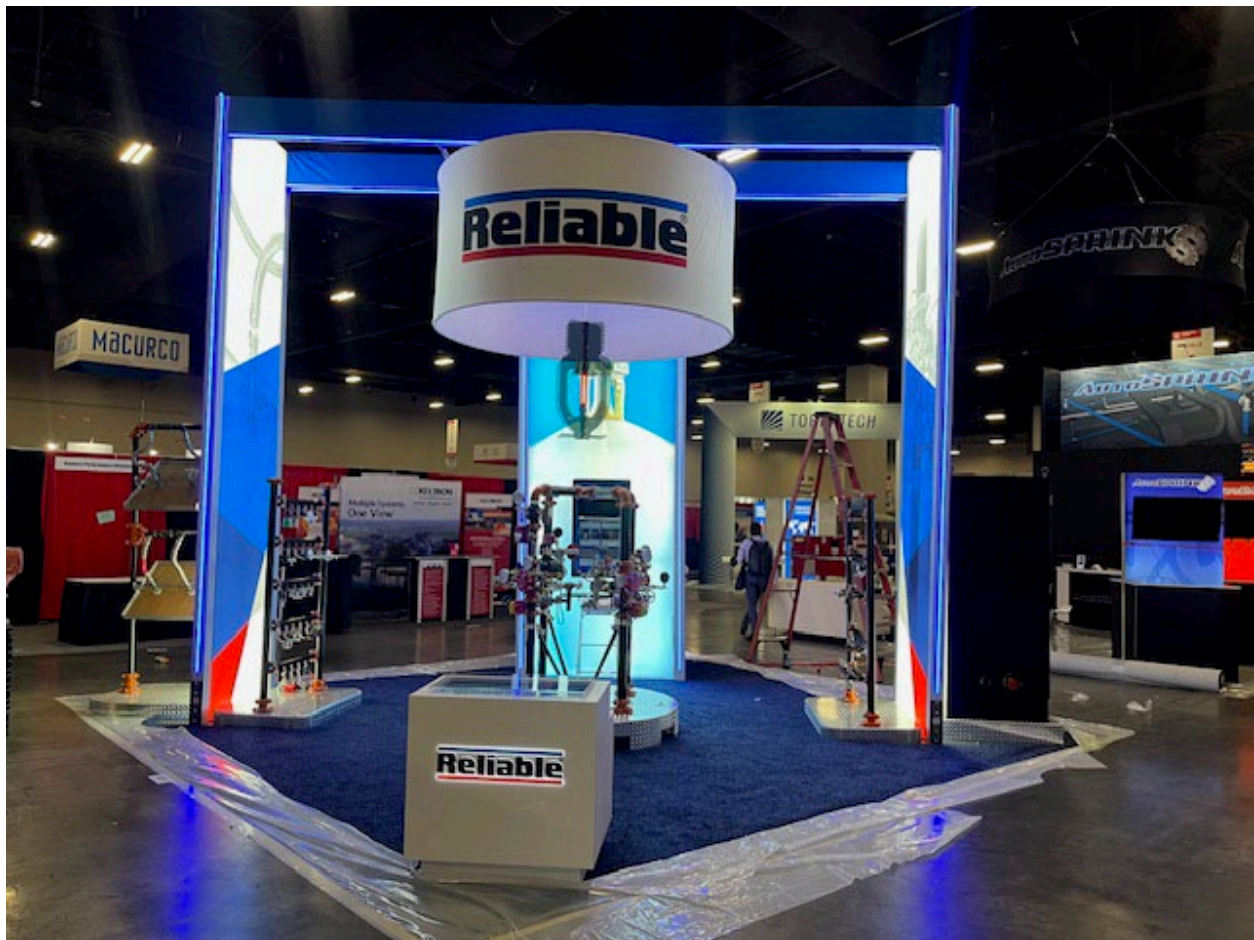


BOOTH SET-UP GUIDE

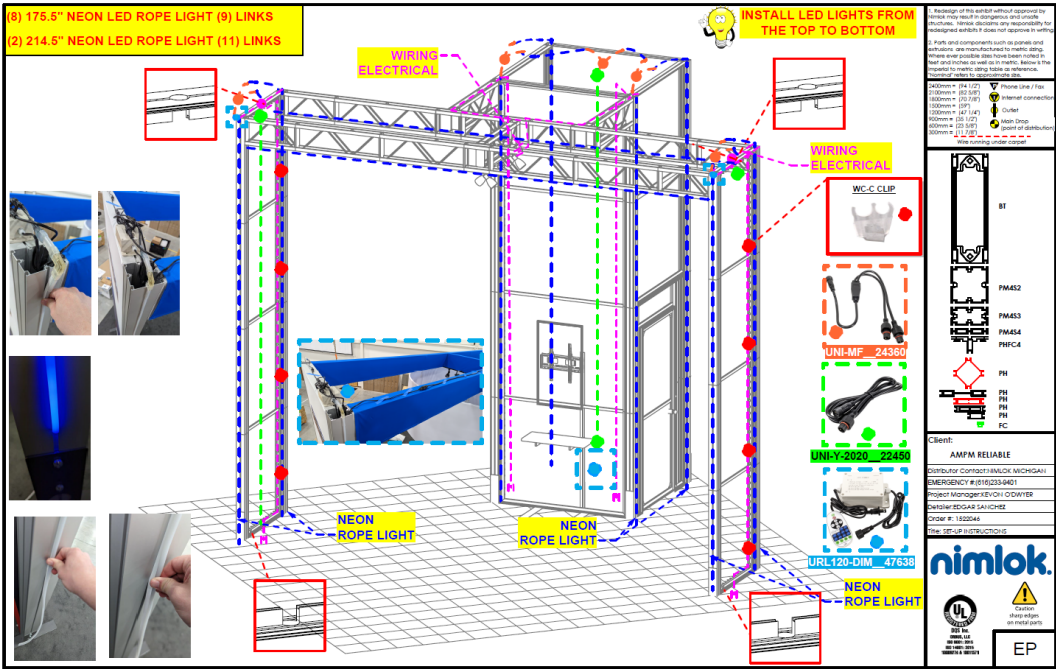
1. Check the booth space number to make sure it is the right location.
2. Double check the floor electrical and compare it to the grid.
3. Look for any furniture that was ordered to ensure it matches the order.
4. Double check the carpet color to make sure it is correct.
5. Count the crates and skids and verify that all have arrived to the booth for installation.
6. When you start the installation process, there are a few specific things to note.
 - a. It is easier to install the blue LED lights when the display is on the ground.
 - b. The hanging banner must be installed prior to the chandelier.
 - c. The chandelier must be installed before moving in the client's valve display.
7. The metal shelving unit, refrigerator, charging station and extra power strip must be assembled and placed in the storage closet during the first day of installation.



BLUE LED LIGHTS GUIDE

Directions for Installation

1. Located in the collapsible skid.
2. There are 8 vertical blue LED light strips and 2 horizontal blue LED strips.
 - a. NOTE: They are not the same size. The horizontal strips are longer.
3. There are metal channels that go on the bottom of the light channel and need to be installed prior to the LED lights so spacing is known. (See picture below for metal plates)
4. A bottle of baby power is located in the light bin.
 - a. NOTE: The LED lights are to be placed within the channels. Please note just a little bit of baby powder placed on your hands and rubbed on the back of the LED lights will help ease them into the channels. No tools should be used when installing the lights.



CHANDELIER GUIDE

(Parts in Pelican Air Case)

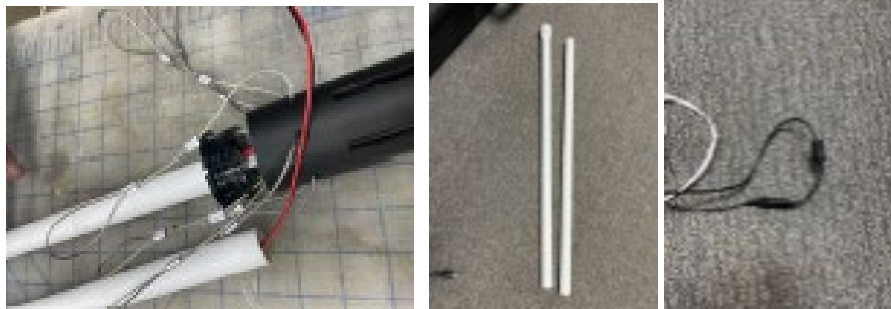
- 15-ft. white extension cord
- Transformer box and connection wire
- Six smoked acrylic chandelier wings
- Red acrylic tube w/light, wire and two white connector poles
- Airline cable and crimps



CHANDELIER GUIDE cont.

Directions for Installation

1. Connect the two white pipes to the main light structure and thread the electrical wires through the pipes. When threaded through, connect the black connects. Apply black electrical tape over the connection.



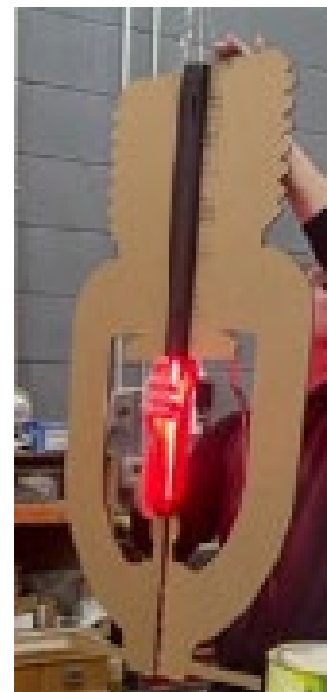
2. Connect the airline cable to the light and then connect it to the display.
 - a. NOTE: For the chandelier, the clamps and hanging will only need two aircraft cables.
3. Once the main structure is secured, put the smoked acrylic chandelier wings on (slide in position). Must connect opposite sides as you install them.
 - a. NOTE: Wipe down the chandelier. Wear gloves (two people).
4. Connect the top of the wire that extrudes from the white poles to the transformer.

5. Tape the transformer to the top of the truss.

6. Run the wire from the transformer towards the closet on the top of the closet. Plug in the white extension cord to the end of the black wire from the transformer.



7. Test the light.

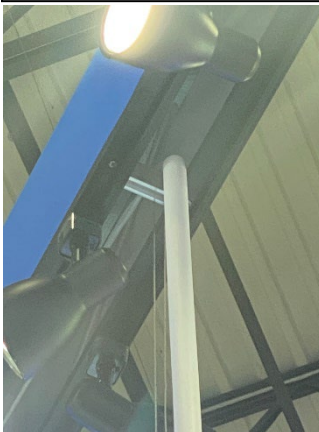


CHANDELIER GUIDE cont.

Directions for Dismantle

1. Unplug the extension cord and roll it up so it fits in the case.
2. Remove the tape from the transformer and black cord and place the transformer and black cord into the case.
3. Carefully, remove the acrylic chandelier wings one at a time and opposite sides at a time to keep the unit's weight distribution even.
4. Wrap each acrylic wing into a protective wrap and place into the case.
5. Remove the airline cable from the display, but leave the cable connected to the top of the light unit.
6. Unscrew and disconnect the two white posts from the main chandelier unit; keeping the wire threaded through the white posts.
7. Wrap the red acrylic light.
8. Put the main unit with the red light and white posts into the case.

Pole placement within truss/track lighting area (white pole flush at top).



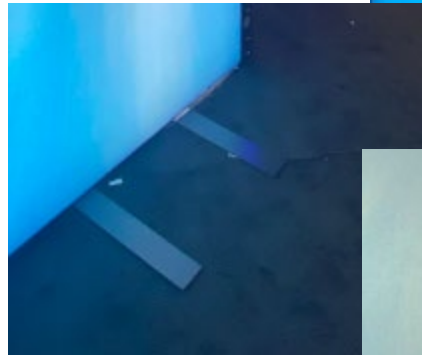
Chandelier placement during the booth (centered within the hanging sign).



TOUCHSCREEN GUIDE

Notes for Installation

- Hide the feet from the tv stand and the shelf stand under the carpet.
- Place the shelf under the touchscreen.
- Plug in the touchscreen to ensure it works.
NOTE: A toggle and cords are in the touchscreen case.
- The touchscreen case ships in the collapsible skid.
- If installing or updating the kiosk, please remember to turn on the keyboard and the toggle when using the wireless ones.



Collapsible Skid

(black foldable plastic) #10

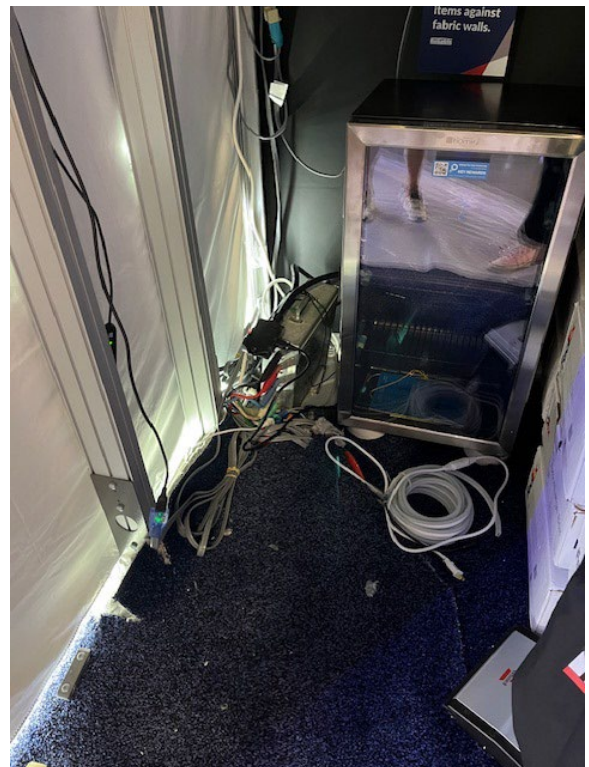
- One stool placement under the shelf/kiosk
- LED light tub w/baby powder
- Chandelier
- Wood stencil and paint for crates
- Items for placement inside the closet/storage area:
 - Cleaning supplies
 - Metal shelving unit
 - Refrigerator
 - Charging station
 - Surge protector



Collapsible Skid cont.

(Pictures of contents)

- Metal shelving unit
- Refrigerator



NCrate (black plastic crate) #5

- Open first crate
- Setup instructions
- Second stool
- Hanging sign



NCrate
(black plastic crate) #5 cont.



NCrate (black plastic crate) #6

- Truss and touchscreen items

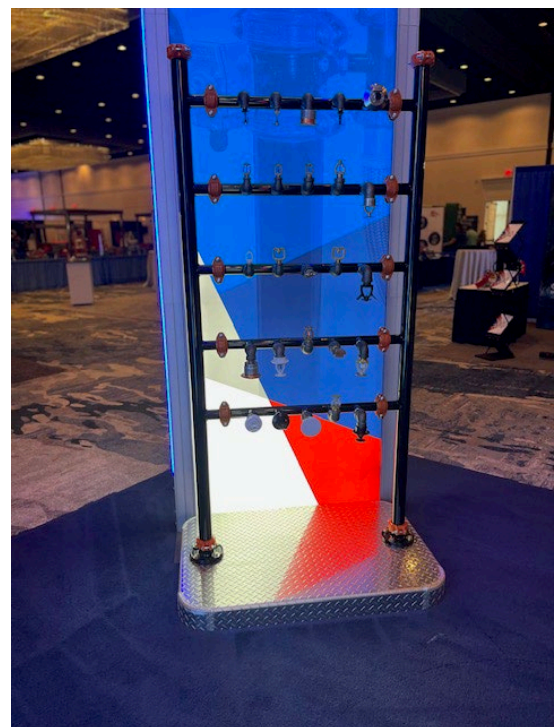


NCrate
(black plastic crate) #7

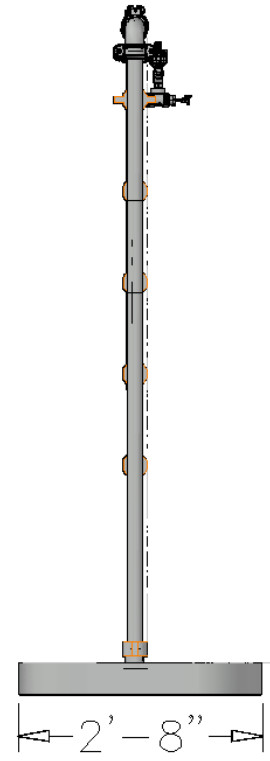
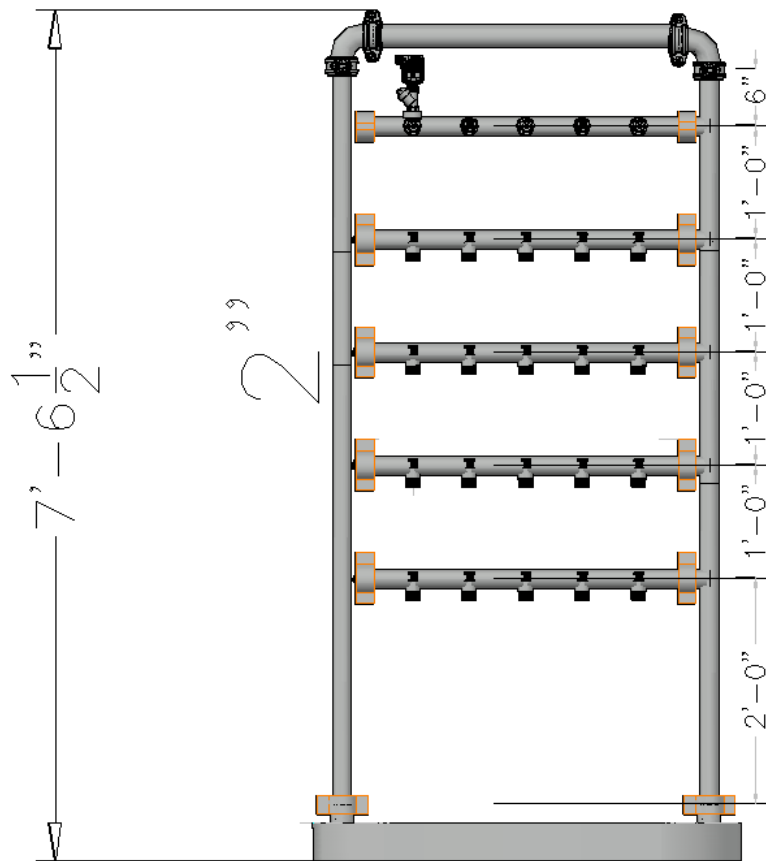


Sprinkler Display (wood crate) #2

- Spotlights are in this crate



Sprinkler Display
(wood crate) #2 cont.



ESFR

(wood crate) #1

- Acrylic cover
- Tool kit
- Two keyboards
- Lanyards

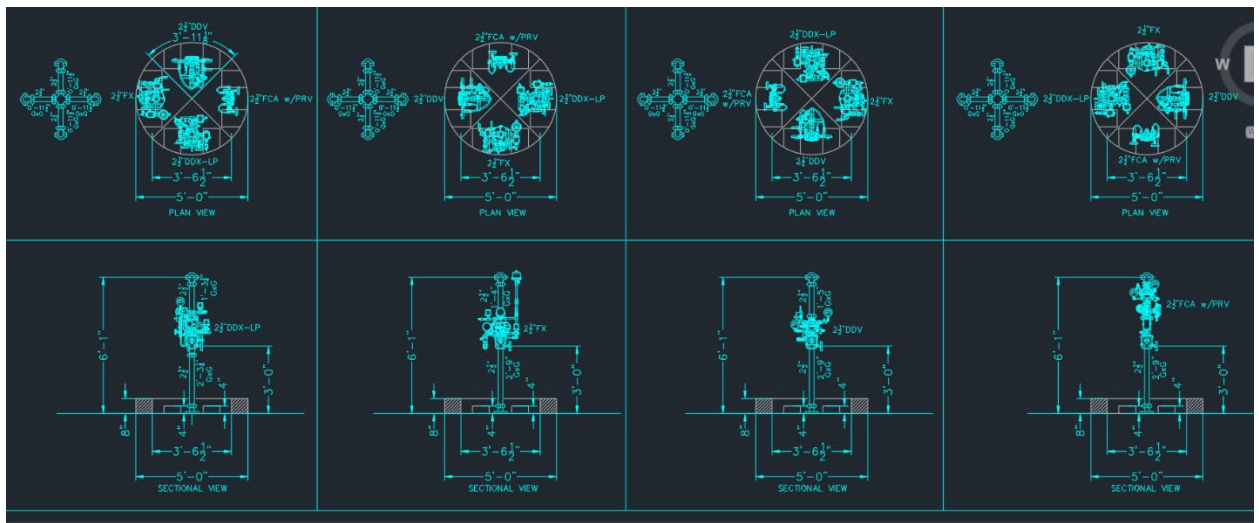
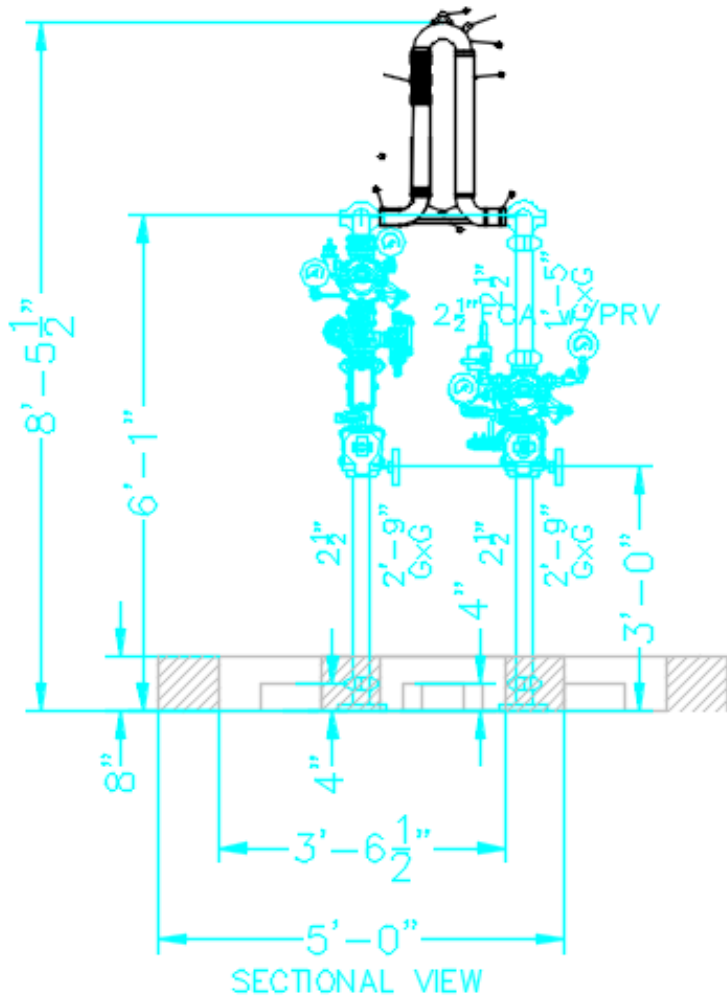
Installation Instructions

1. The display should be sitting on an angle and placed over an electric plug.
 2. Plug in the television.
 3. Put the acrylic structure that is inside the display on top of it.
- NOTE: The door etching is facing out.



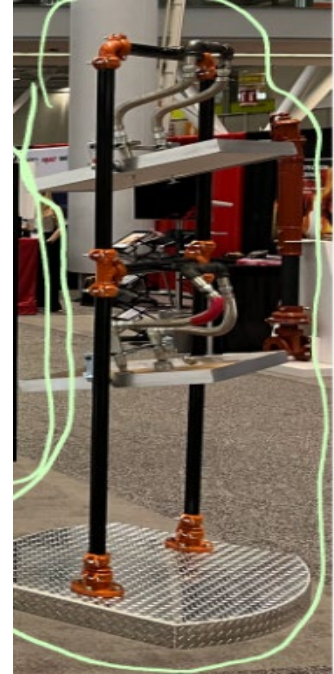
Valve Display
(wood crate) #8





Rascoflex Display
(wood crate) #
Currently at Reliable

- New pictures needed



PrePak Display (wood crate) # Currently at Reliable

- New pictures needed
- Take the door off at the show and send it with the empty crate.
- Door pins stay in the PrePak

